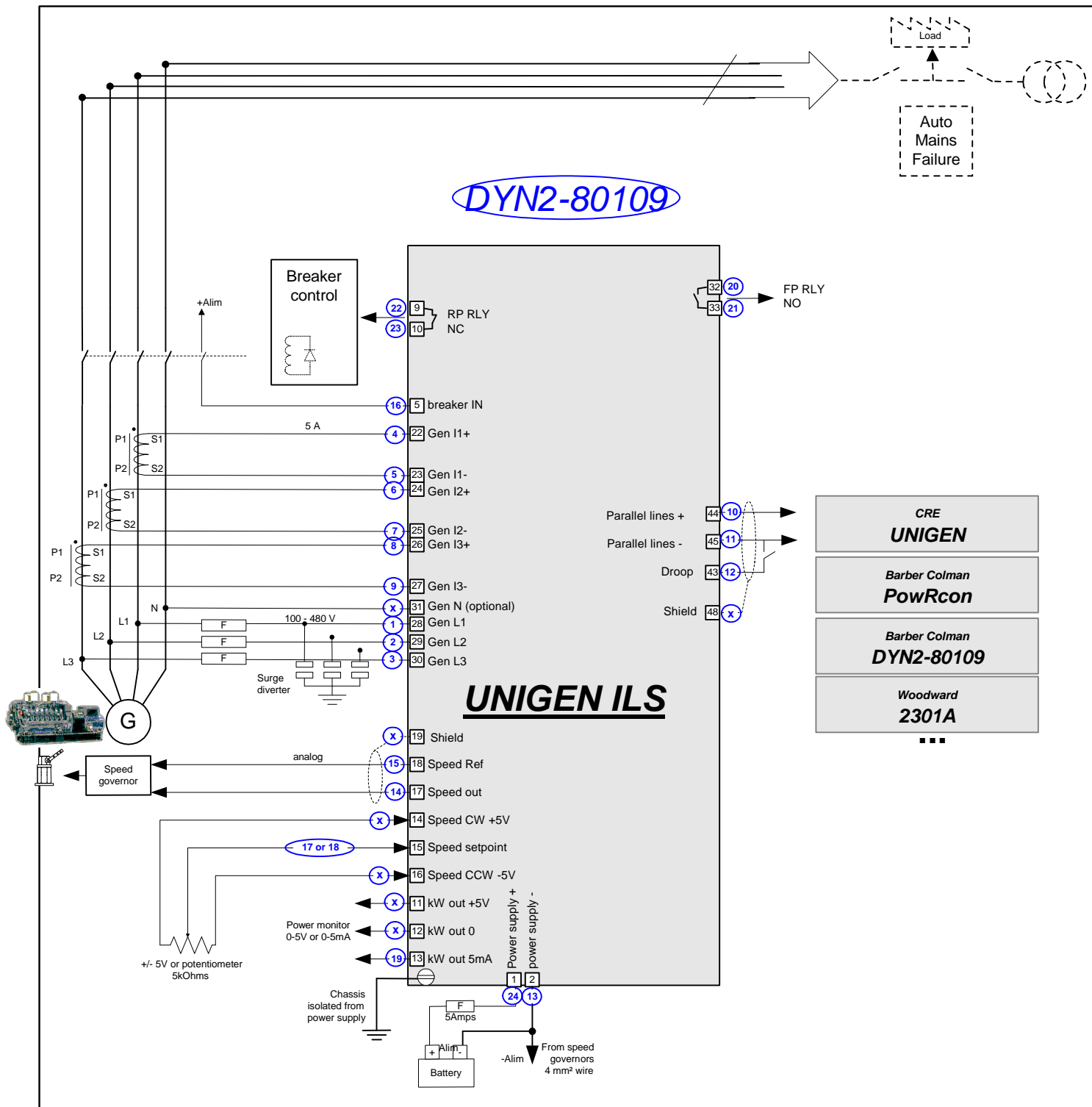


DYN2-80109



- CRE
UNIGEN
- Barber Colman
PowRcon
- Barber Colman
DYN2-80109
- Woodward
2301A

- 22 DYN2-80109 terminal number
- 9 UNIGEN ILS terminal number
- X connexions not used by the DYN2-80109

	DYN2-80109 / UNIGEN ILS 50Hz			
	Application note -			
	Replacement of a DYN2-80109 by a Unigen ILS 50Hz			
	REV.	DESCRIPT	DATE	PAR
d				
c				
b	Modifs	20-10-06	SF	
a	Création	10-10-06	SF	
			N°DESSIN A51Z390101	
			REV B	
			FEUILLE 1 DE 2	

Replacement of a DYN2-80109 by a Unigen ILS 50Hz

Signal	DYN2-80109	Unigen ILS 50Hz
Voltage phase A or L1	1	28
Voltage phase B or L2	2	29
Voltage phase C or L3	3	30
Current phase A or 1+	4	22
Current phase A or 1-	5	23
Current phase B or 2+	6	24
Current phase B or 2-	7	25
Current phase C or 3+	8	26
Current phase C or 3-	9	27
Parralel lines high	10	44
Parralel lines low	11	45
Droop	12	43
power supply -	13	2
governor connexion: speed out	14	17
governor connexion: speed ref	15	18
paral relay: breaker in	16	5
remote speed: speed setpoint	17	15 Connect the potentiometer of remote speed or the output of the synchrocoupler
sync: speed setpoint	18	
power monitor out	19	13 if you want to have 0-5mA or 11 if you want to have 0-5VDC
FP RLY	20	32
FP RLY	21	33
RP RLY	22	9
RP RLY	23	10
power supply +	24	1
Others connexions		
power monitor out -	ground 13	12
remote speed CCW	ground 13	16
remote speed CW	speed ref 15	14
shield parallel lines/droop	ground 13	48
shield speed out	ground 13	19
Neutral voltage(optionnal)	nc	31



DYN2-80109 / UNIGEN ILS 50Hz
Application note -
Replacement of a DYN2-80109 by a Unigen ILS 50Hz

REV.	DESCRIPT	DATE	PAR		
d					
c				N°DESSIN	REV
b	Modifs	20-10-06	SF	A51Z390101	B
a	Création	10-10-06	SF	FEUILLE	2 DE 2