

CHP plants require high flexibility and a high level of performance from the controllers. Constraints in terms of temperature control and electrical power required to operate differently from conventional power plants with more features and more adapted solutions.

The plant is composed of two 100kVA gas generators in parallel with the grid and plants of micro-turbines.

Gas generating sets are equipped with **GENSYS 2.0** to manage:

Specific gas engine start / stop sequences

- Ignition and preheating
- Idle speed
- Tightness control and gas emptying

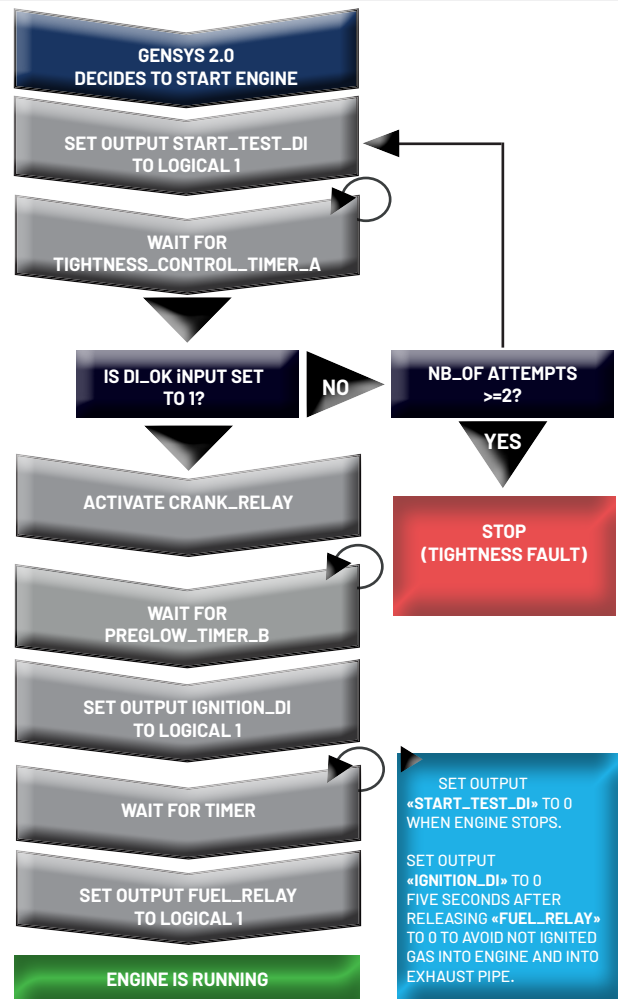
Power management:

- Dedicated Ramp up/ down,
- Control of active and reactive power,

- Paralleling protections,
- kW Base load mode depending on temperature & gas flow.

CRE TECHNOLOGY has been able to meet the technical specifications required in terms of gas engine and cogeneration control thanks to its highly integrated solutions and their ability to include specific sequences.

APPLICATION



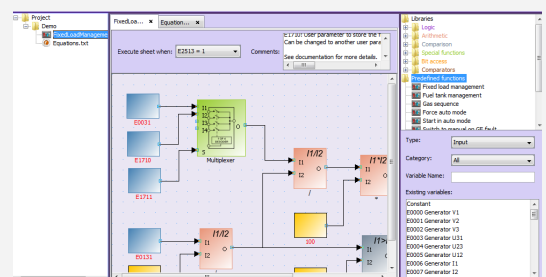
PROGRAMMING

EASY PLC

Program and customize your internal logical sequences

CRE TECHNOLOGY's Easy PLC is a logic editor which provides graphical interface to create PLC instructions for GENSYS2.0.

Easy PLC simplifies the process of proprietary writing instructions thanks to a user-friendly graphic environment. That includes many sheets in which the user create instructions through «operators».





EXPERT IN GENERATOR SOLUTION

CRE TECHNOLOGY

130 allée Charles-Victor Naudin - Les templiers - Sophia Antipolis

06410 BIOT / FRANCE

Tél: +33 (0) 492 38 86 82

Fax: +33 (0) 492 38 86 83

info@cretechnology.com

COMBINED HEAT & POWER APPLICATION GERMANY_EN_A2018

