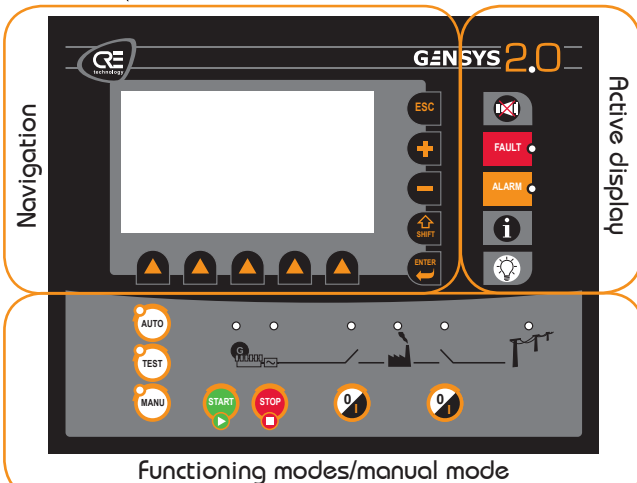


## 1 THE FRONT PANEL



## 2 OPERATIONAL MODES

The GENSYS2.0 can be configured and controlled with the front panel, which is separated in two parts:

1. The top end part: dedicated to the navigation, monitoring and measure display.
2. The bottom end part: dedicated to the 3 functioning modes selection:

- **AUTO** - This mode makes the GENSYS2.0 operate the installation in a fully automatic mode according to its settings and configuration, without any external intervention.
- **TEST** - This mode simulates the start of the Auto mode with the according sequences, to exit from the TEST mode, simply press AUTO again or press on MANUAL mode.
- **MANU** - This mode will allow you to manage your installation with the front panel buttons manually, you will be able to start/stop the generator, open/close the breakers while still benefiting from the active protections of the GENSYS2.0 and the automatic synchronization and load/unload sequences.

## 3 MENUS

Once the GENSYS2.0 is switched on, you can access the menus on 2 different Levels:  
To access to the Password page, press ESC.

- Level 0 → no password required, just press twice on «ENTER» to access to the standard electric measures display.
- Level 1 → Password «1». In the password page, press «ENTER» and select character "1", then press «OK» to confirm and «ENTER» to access to the menu. This menu will give you access to the display, configuration and system settings of the GENSYS2.0.

The breakdown of menu will appear as follow:

### DISPLAY

Power plant overview	} <i>Electrical measures GE/Bus or mains, global display, power plant consumption, synchronoscope, engine analog sensors bar graph, battery voltage...</i>
Generator electrical meter	
Mains/Bus electrical meter	
Synchronization	
Engine meters	} <i>Real time displays of Digital I/Os, timers. Maintenance cycles status, real time archives</i>
Digital inputs/outputs State	
Active timers	
Maintenance cycle monitoring	
Data logging	

### CONFIGURATION

Power plant	} <i>Installation description (number of Gensys2.0 on the Bus, paralleling type, CAN id...)</i>
Generator	
Mains/Bus	
Engine	} <i>Definition of the electrical measure ratios and generator nominal values, engine and mains/common busbar</i>
Protections	
Inputs	
Outputs	} <i>Protections settings, I/Os configuration, timer settings (ex: start sequence timers, mains back timers ...)</i>
Timers	
Synchronization	
Control loops	} <i>Synchronization and dynamic control settings. (Load share PID, synchronization PID...)</i>
FIFO data logger	
Modification by variable no	
	} <i>Personalized settings (for experienced users only) and internal data archives settings</i>

### SYSTEM

Date/Time/Meters	} <i>Preferences and regional settings</i>
Passwords/Options	
Screen saver	
Languages	} <i>Communication ports settings and SD card interface For upload/download files, and extended archives. General info on software version, serial number and Ethernet connection status (IP address, gateways).</i>
Communication ports config.	
About	

# 4 CONNECTION

For the Gensys2.0 wiring, please refer to the A5320 technical documentation, you will find :

- the electrical specifications of the I/Os in Chapter 2.2.2
- An example of a standard basic wiring schematic is shown in Chapter 7.1 and 7.2 followed by a guide line and verifications before commissioning.

## PC CONNECTION

For a PC connexion on a new Gensys2.0, 3 possibilities:

1. Configure an IP address corresponding to your local network:  
cf. technical documentation, chapter Ethernet connection
2. Configure the Gensys2.0 on DHCP mode - if your local network/intranet allows it : cf. technical documentation, chapter Ethernet connexion
3. Configure on your computer an IP address compatible with the IP address of the Gensys2.0: control panel/network connection/local connection properties TCP/IP connection properties/enter a valid IP address, ex: 192.168.11.100 and with a sub net mask: 255.255.255.

For more information on the connections,  
Please refer to chapter 3 of the technical documentation.

**a** Installation of the CRE CONFIG SOFTWARE on your PC from our website: [www.cretechnology.com/Products/Softwares](http://www.cretechnology.com/Products/Softwares)

**b** Click on the icon



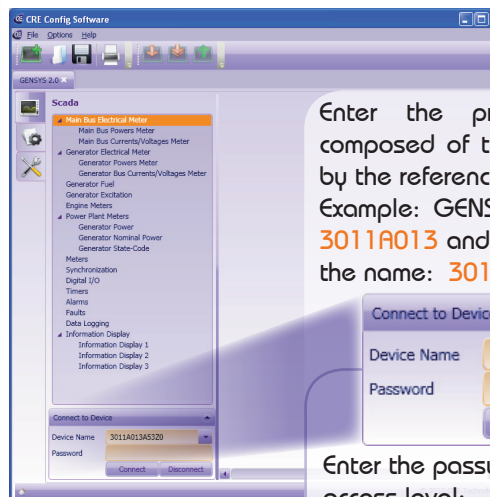
**c** Once on the page shown below, select: GENSYS2.0



# PC CONNECTION



- d** Once the new page is open, you can start an «offline» configuration session « off line ».  
For a connection with the module, please make sure that you have followed the procedure «4. CONNECTION» with the PC. (ie: insert picture).
- e** To open a CRE config connection, Please follow the procedure:



Enter the product name, which is composed of the serial number followed by the reference.  
Example: GENSYS2.0 with serial number 3011A013 and reference A5320 will have the name: 3011A013A5320

Enter the password according to the access level:

- No password: Visualization
- Password "1": Visualization and configuration

**f** Once connected, you will be able to navigate through the menus :

- SCADA (Visualization)
- Configuration (product settings)
- System: (Info, preferences and communication ports configuration)

You will also be able to manage your files using the tool bar: configuration upload/download, save, add new page...)



## NOTE

Before the commissioning or the operation of your equipment, please read carefully the user's manual and other related documentations. Carefully apply the safety instructions, not applying them may lead to human and machine damages.

Engines, turbines or any other type of Generator must be equipped with protections (overspeed, temperature, pressure... depending on your installation).

Any misuse of your equipment can lead to human or machine damages.

For any further information, please contact your local distributor or agent or directly our support team.

All our products have a 1 year warranty.

We also offer the possibility of personalized and specific training on our product range and software, as well as additional services such as; onsite support, application engineering or specific support.

Help desk:  
+33 492 38 86 86

E-mail: [support@cretechnology.com](mailto:support@cretechnology.com)  
SKYPE: [support-cretechnology.com](https://www.skype.com/join/support-cretechnology-com)

[www.cretechnology.com](http://www.cretechnology.com)

# GENSYS 2.0

[www.cretechnology.com](http://www.cretechnology.com)