

A	B	C	D	E	F	G	H	I	J	K	L	M	N	O	P	Q									
Folio	Désignation						Indice A B C D				Date	Folio	Désignation						Indice A B C D				Date		
1	01	Présentation											29												
	02	Summary											30												
2	03	Single line diagram / Schéma unifilaire											31												
	04	Power wiring / Câblage de puissance											32												
	05	Digital input wiring / câblage entrées logiques											33												
3	06	Digital input wiring / câblage entrées logiques											34												
	07	Governor & Engine control/Câblage régulation et Moteur											35												
	08	Digital output and AVR /sorties logique et AVR											36												
4	09	Analogue Inputs / Entrées analogiques											37												
	10	Power transducer / Mesure réseau 4-20mA (option)											38												
5	11	Not use: COM 1 Inter Gensys2.0 Communication											39												
	12	COM 2 J1939 / I/O extension											40												
	13	COM 5 Modbus RTU											41												
6	14	//											42												
	15	//											43												
	16	//											44												
7	17	//											45												
	18	//											46												
8	19	//											47												
	20												48												
	21												49												
9	22												50												
	23												51												
	24												52												
10	25												53												
	26												54												
	27												55												
11	28												56												

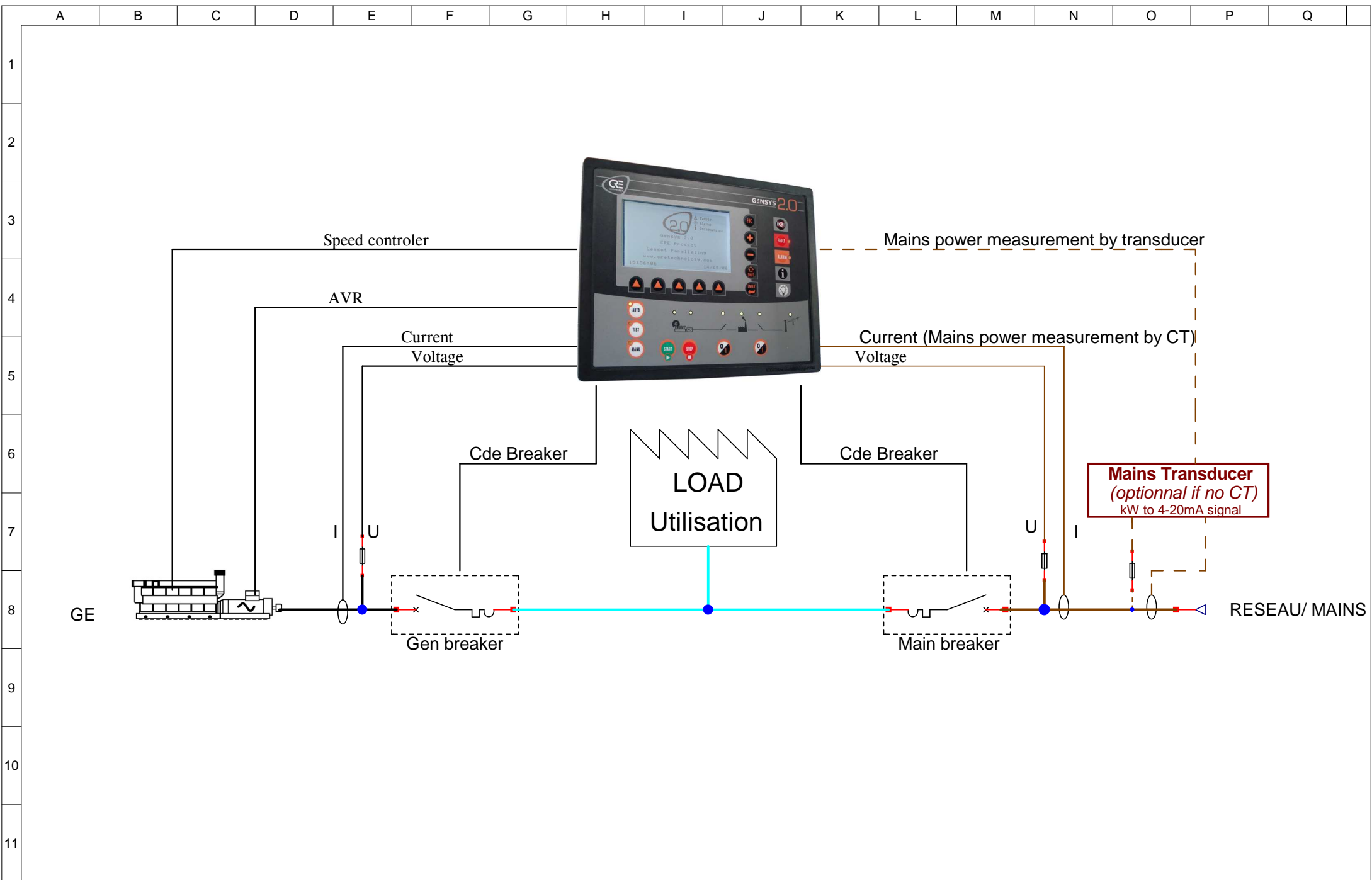
C.R.E
TECHNOLOGY

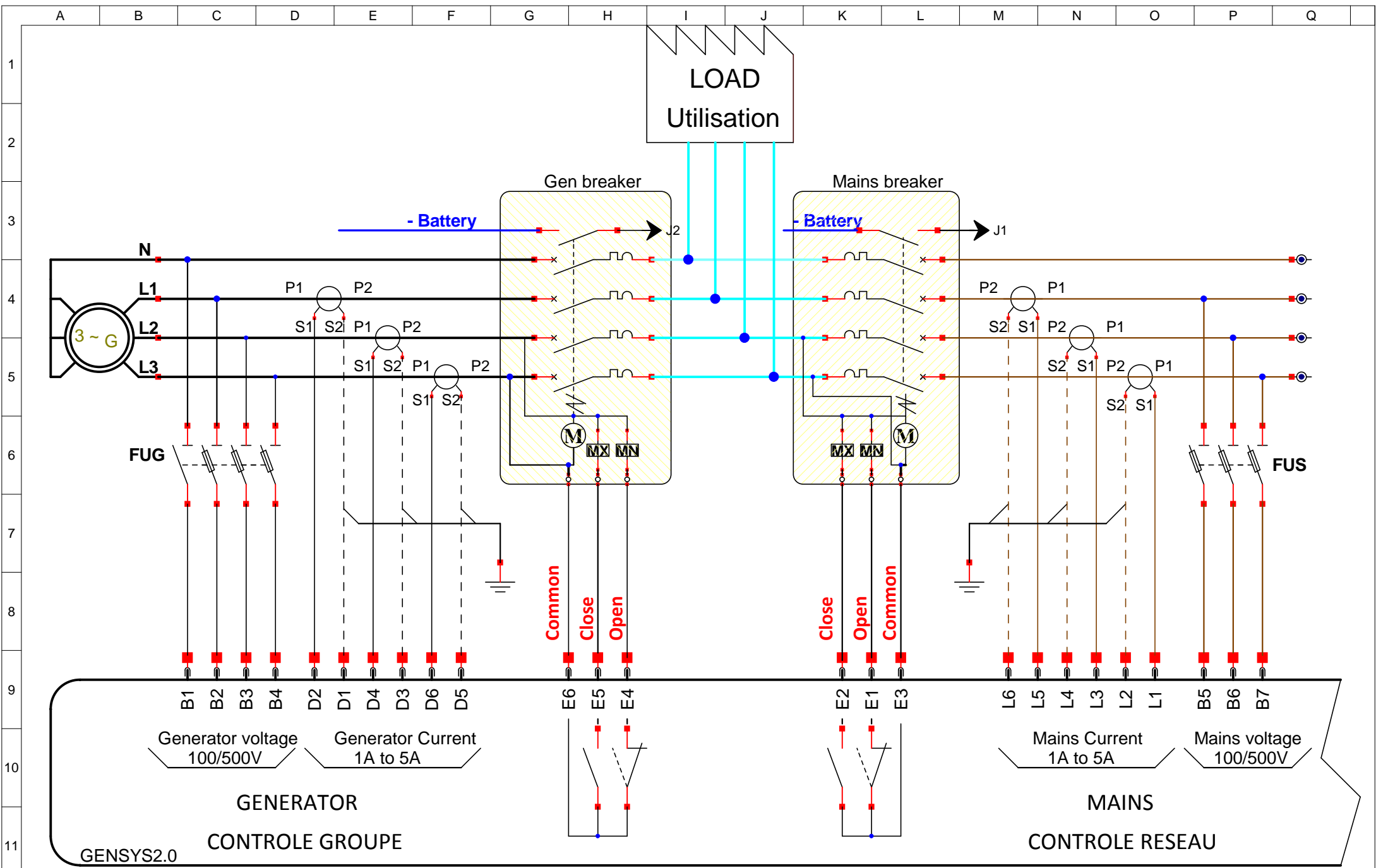
Mains paralleling for single generator wiring example
Summary

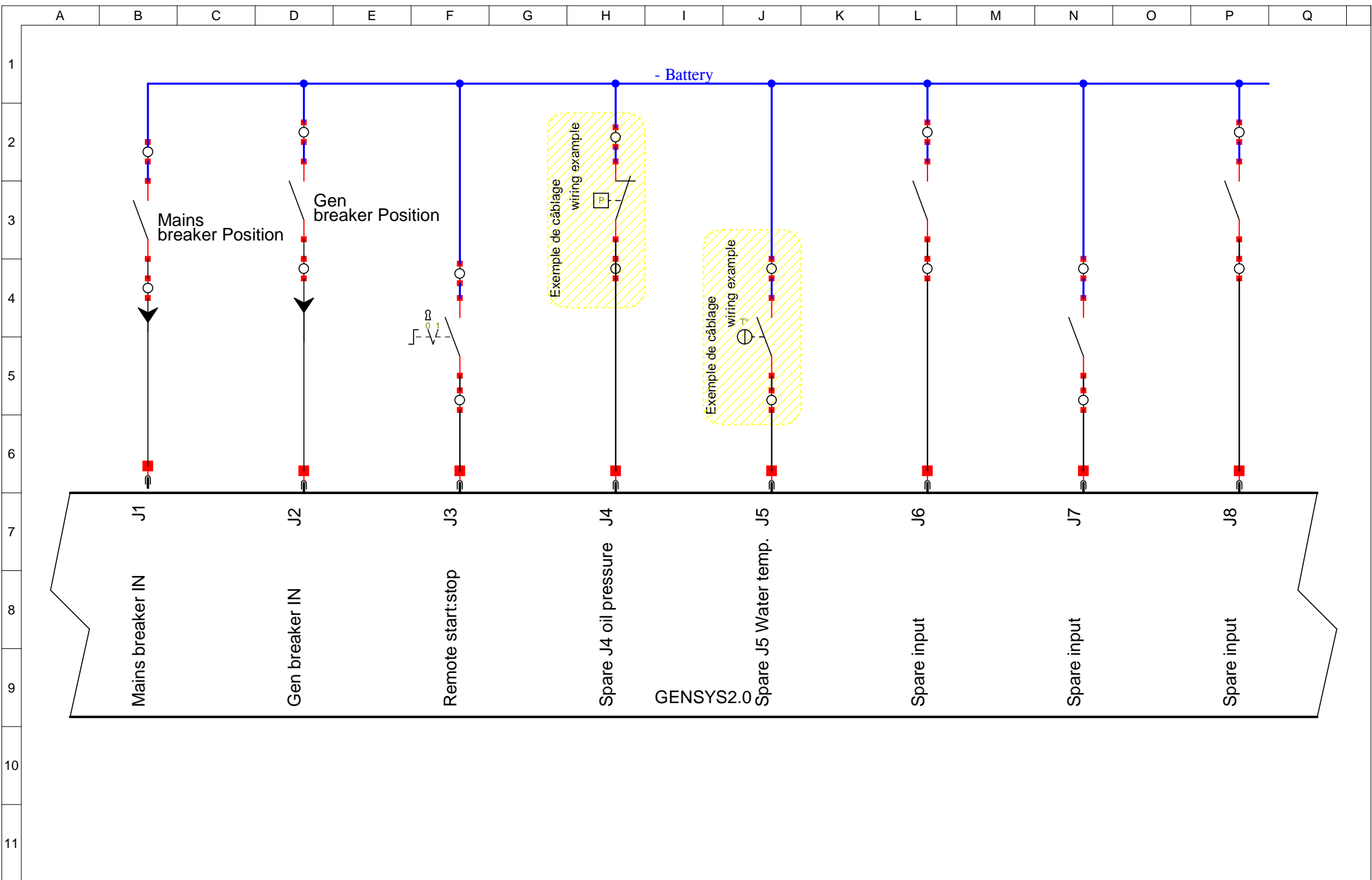
Dessiné le : Mars 2012
Modifié le : 20/2012
Par : MAUNIER Mikael

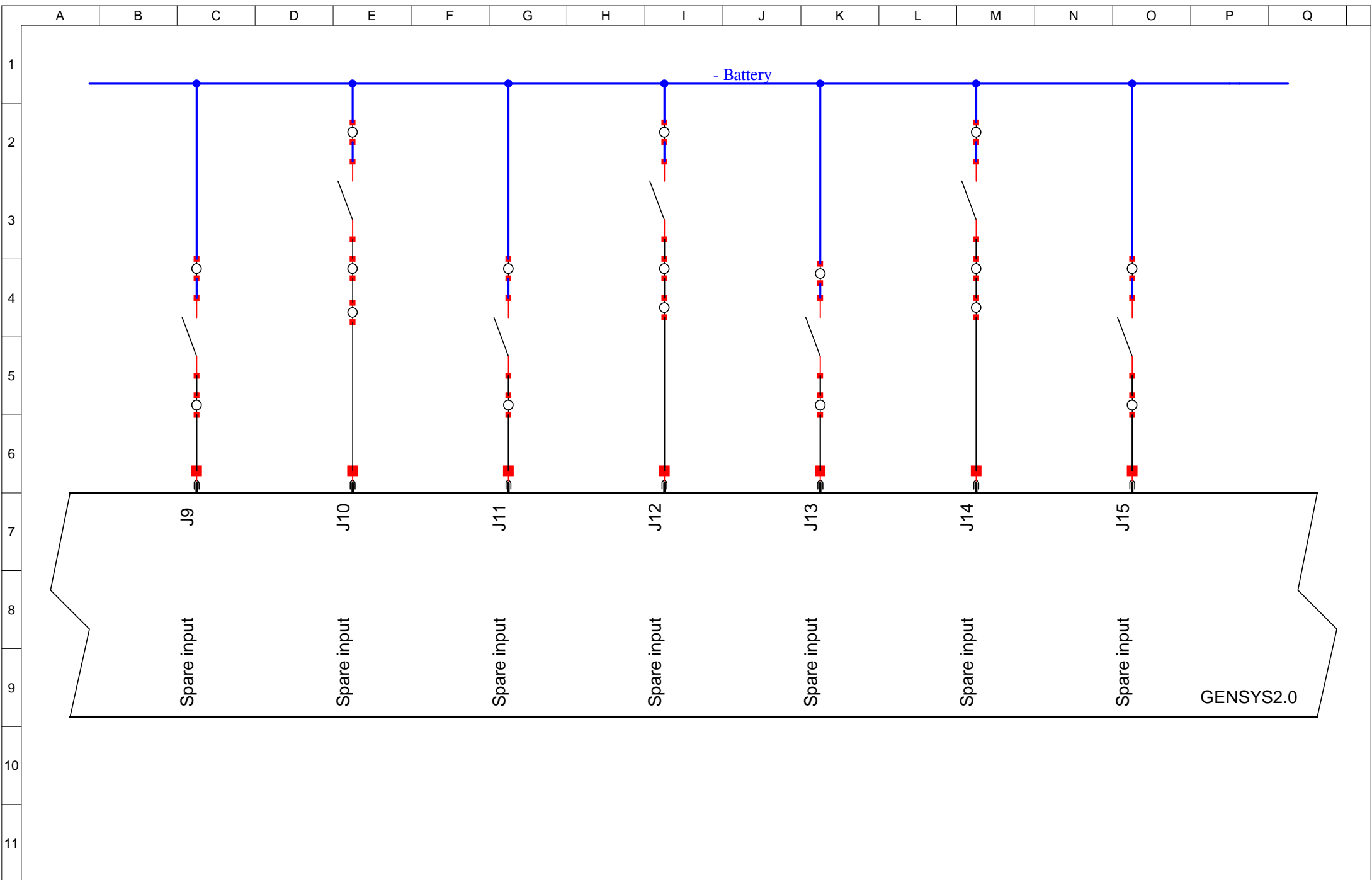
02

13









J9

J10

J11

J12

J13

J14

J15

Spare input

Spare input

Spare input

Spare input

Spare input

Spare input

Spare input

GENSYS2.0

C.R.E

TECHNOLOGY

Mains paralleling for single generator wiring example

Digital input wiring / câblage entrées logiques

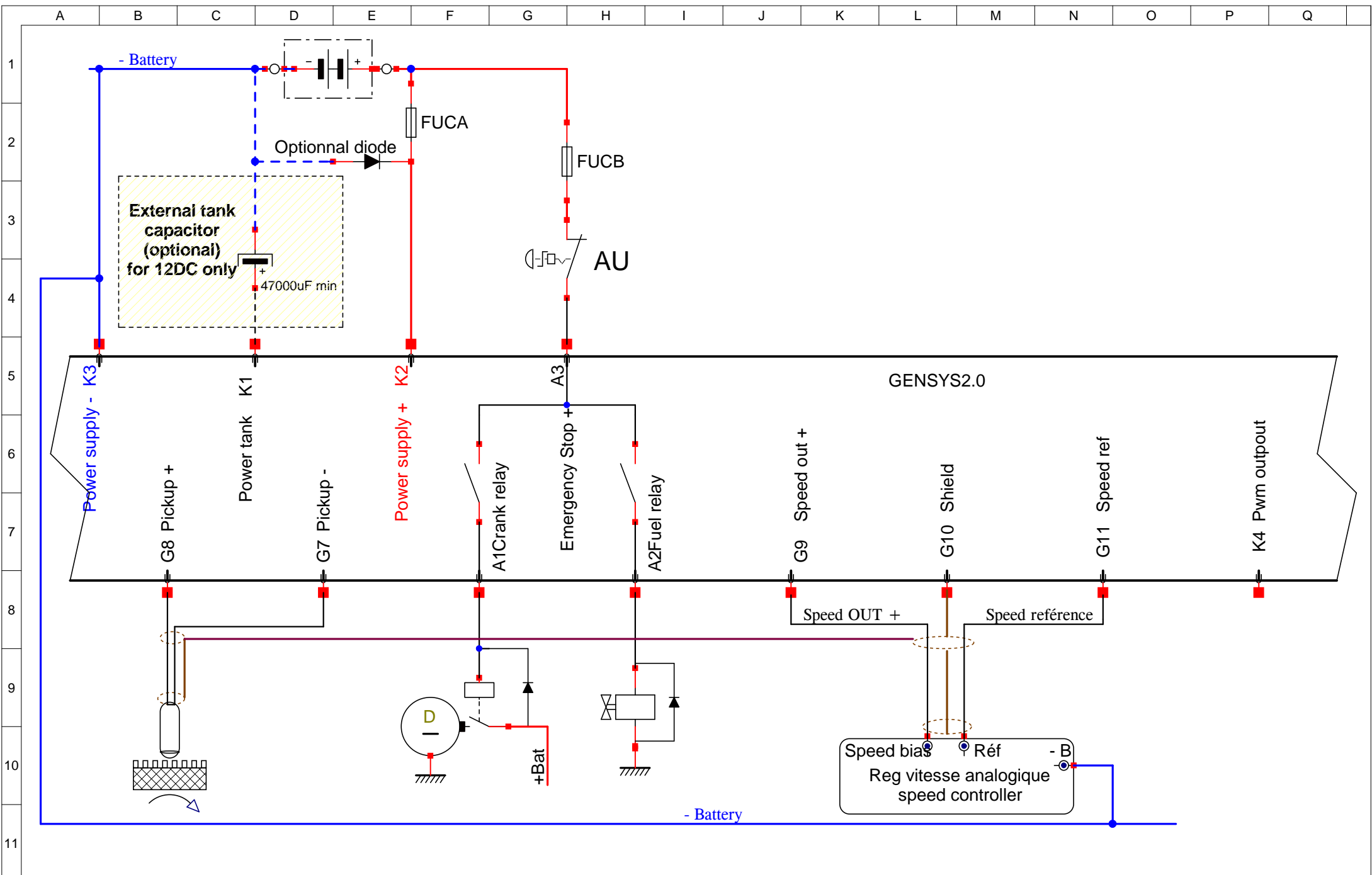
Dessiné le : Mars 2012

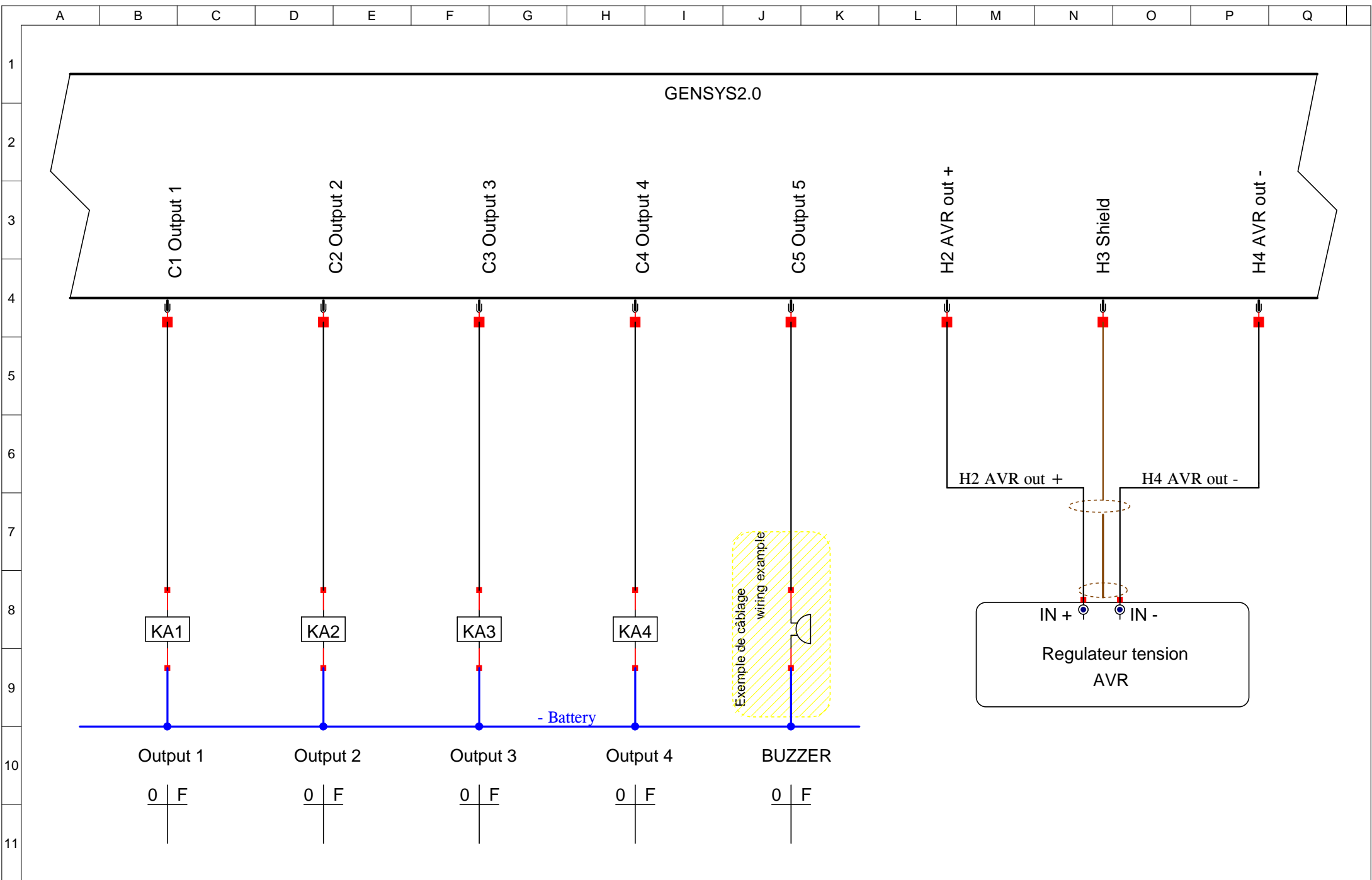
Modifié le : 20/2012

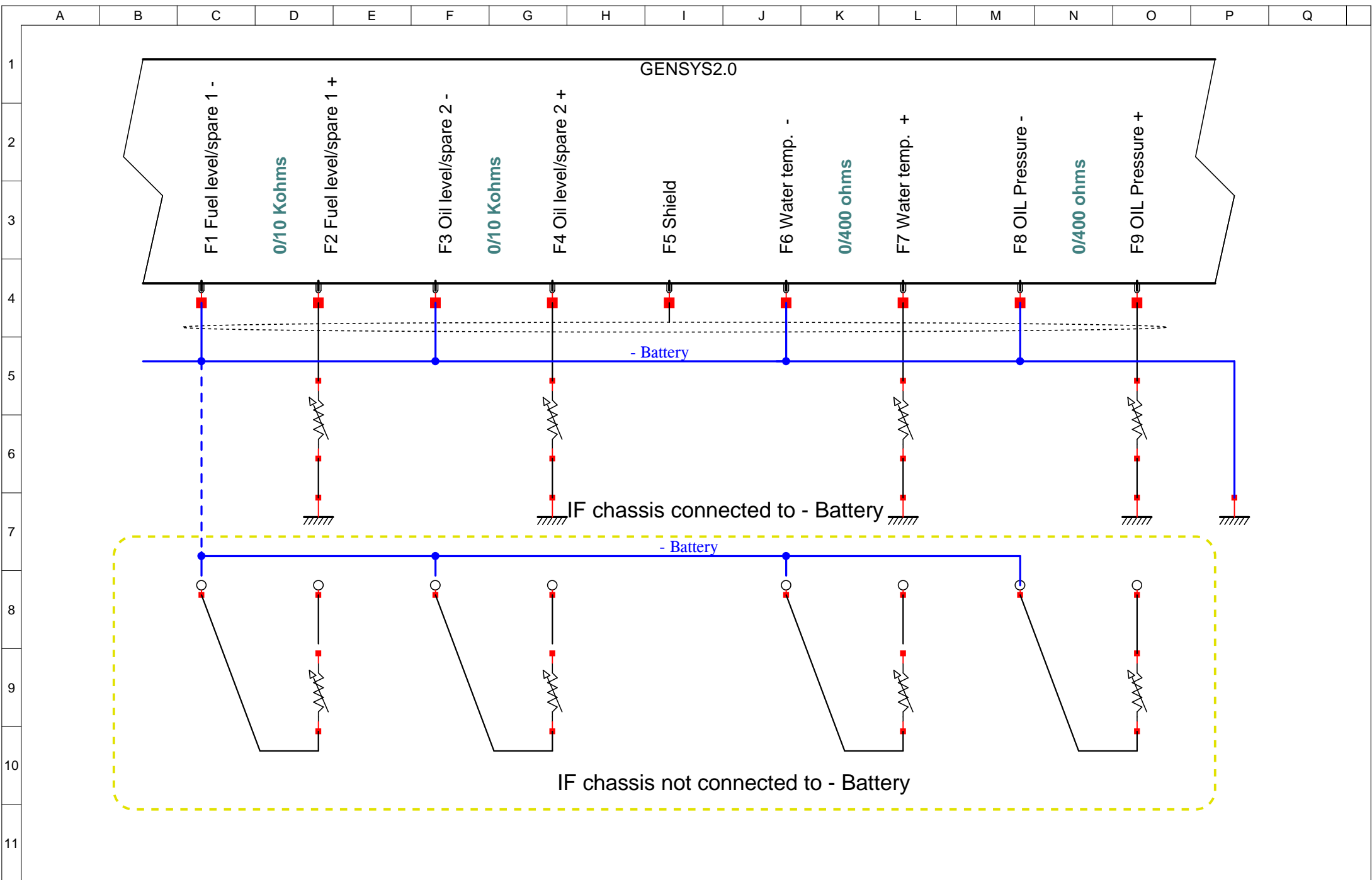
Par : MAUNIER Mikael

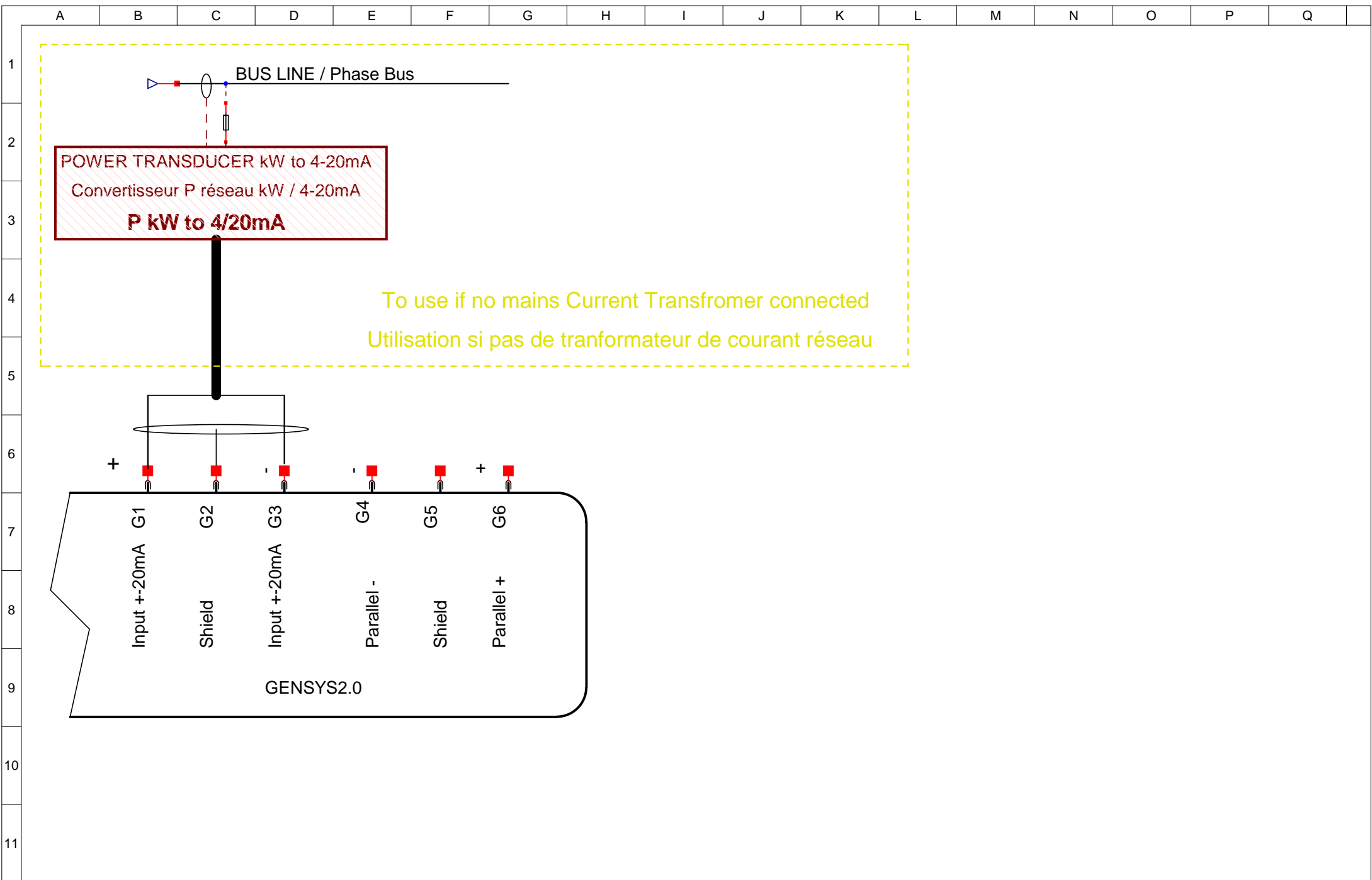
06

13



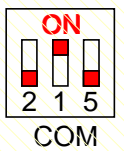






- 1 NC
 - 2 CAN-L
 - 3 GROUND-1
 - 4 NC
 - 5 GROUND-2
 - 6 GROUND-1
 - 7 CAN-H
 - 8 NC
 - 9 NC
- COM 1 GENSY5

Resistor Switch
ON 120 Ohms



Non utilisé en utilisation 1 GENSY5.0 couplage réseau

Not connected if single GENSY5.0 on mains paralleling operation

