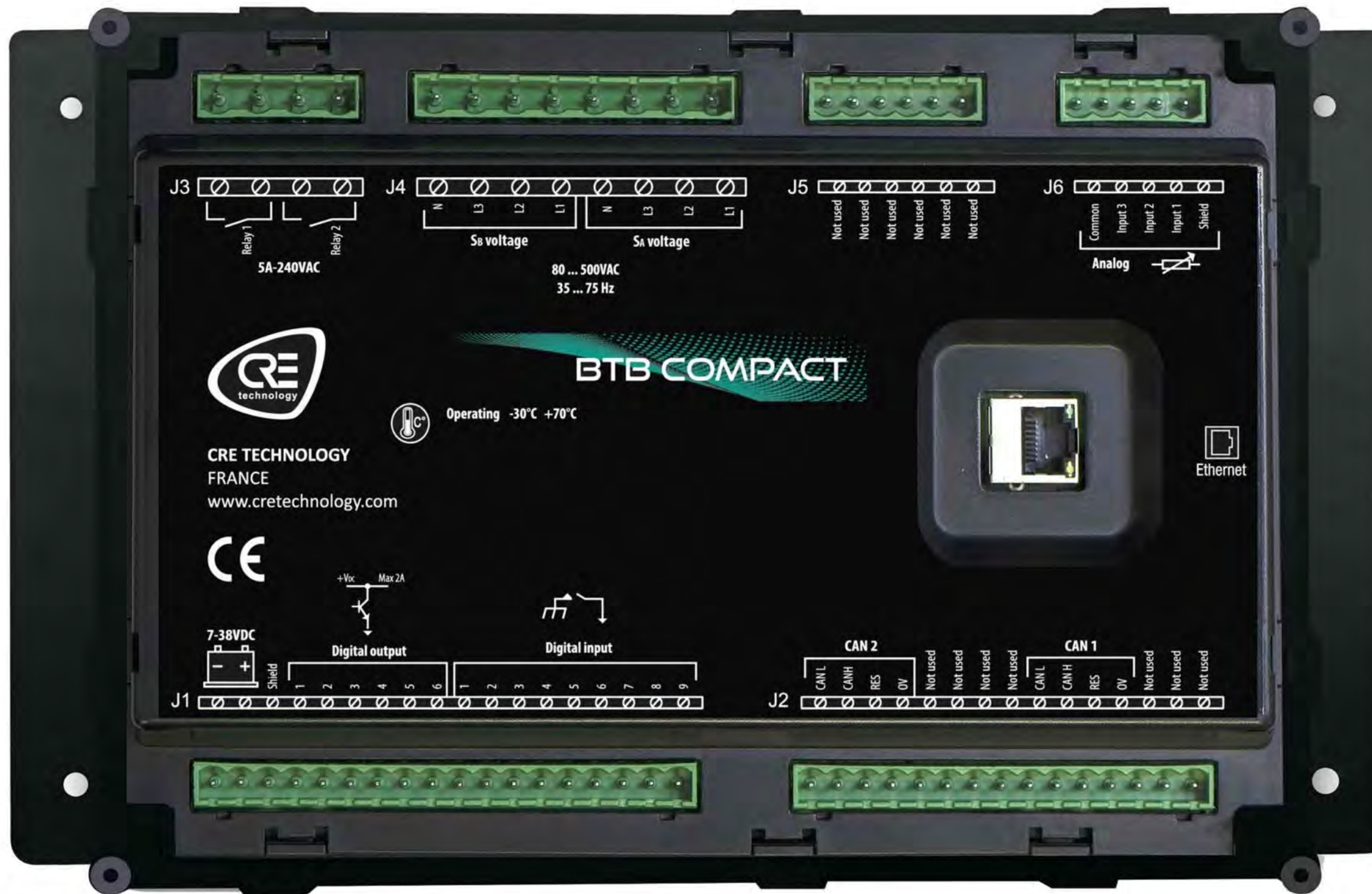


Created: 17/03/2022
 Drawing n°: A56-BTB-00 / 10 - DWG - 001
 Drawn: DB

REVISION	DATE	MODIFICATION	DRAWN
A	19/05/2019	FIRST RELEASE	DB

BTB COMPACT HMI / CORE
 STANDARD WIRING SCHEMATICS

Module Front view

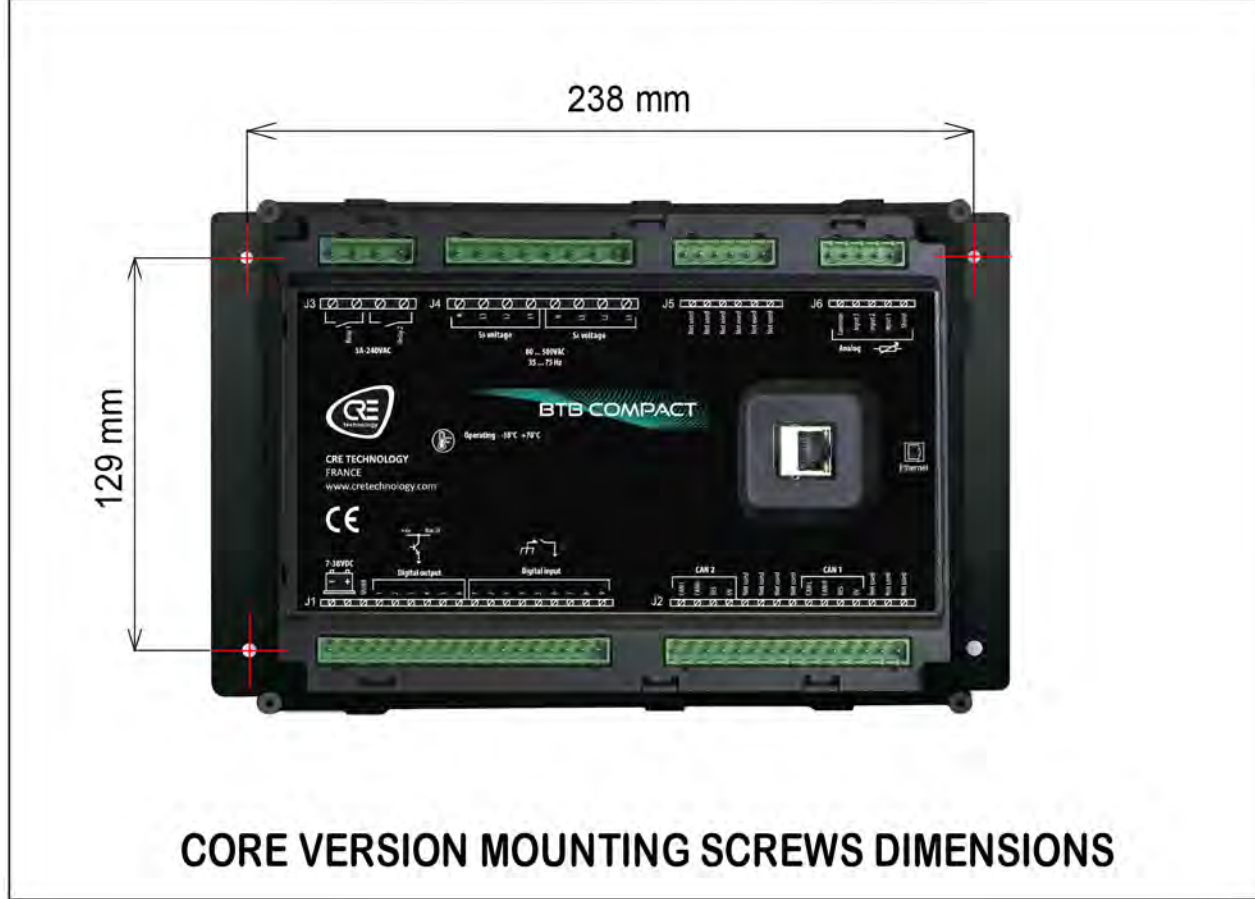
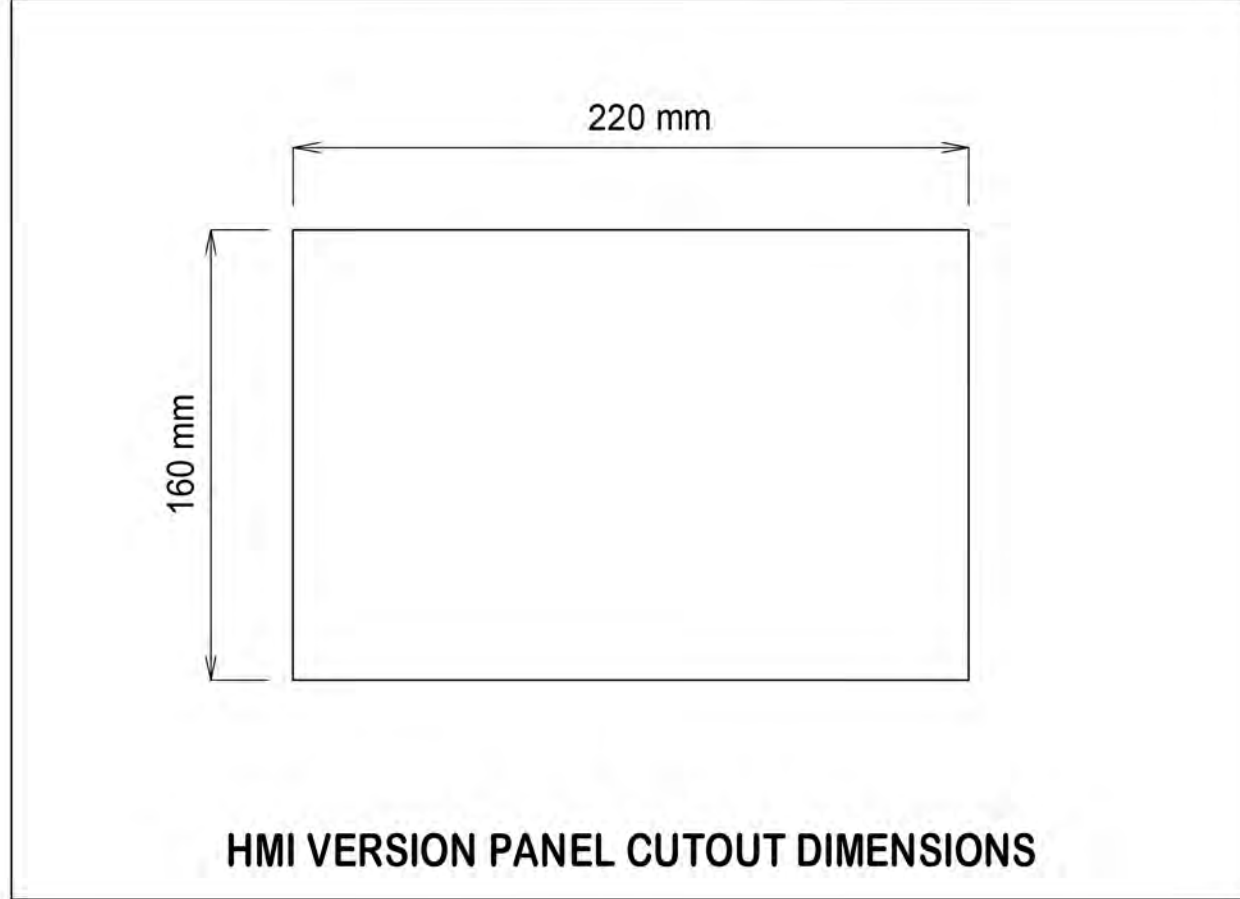
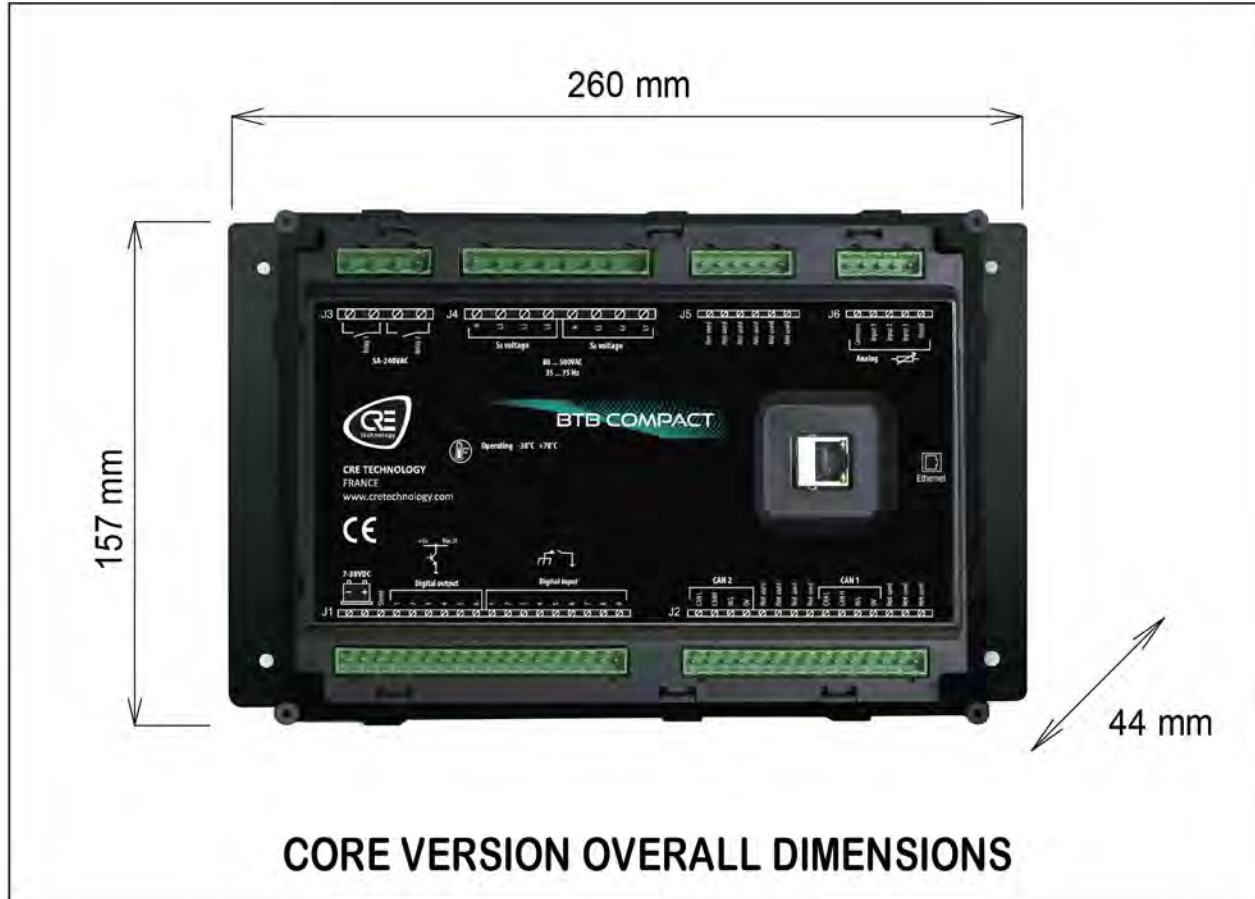
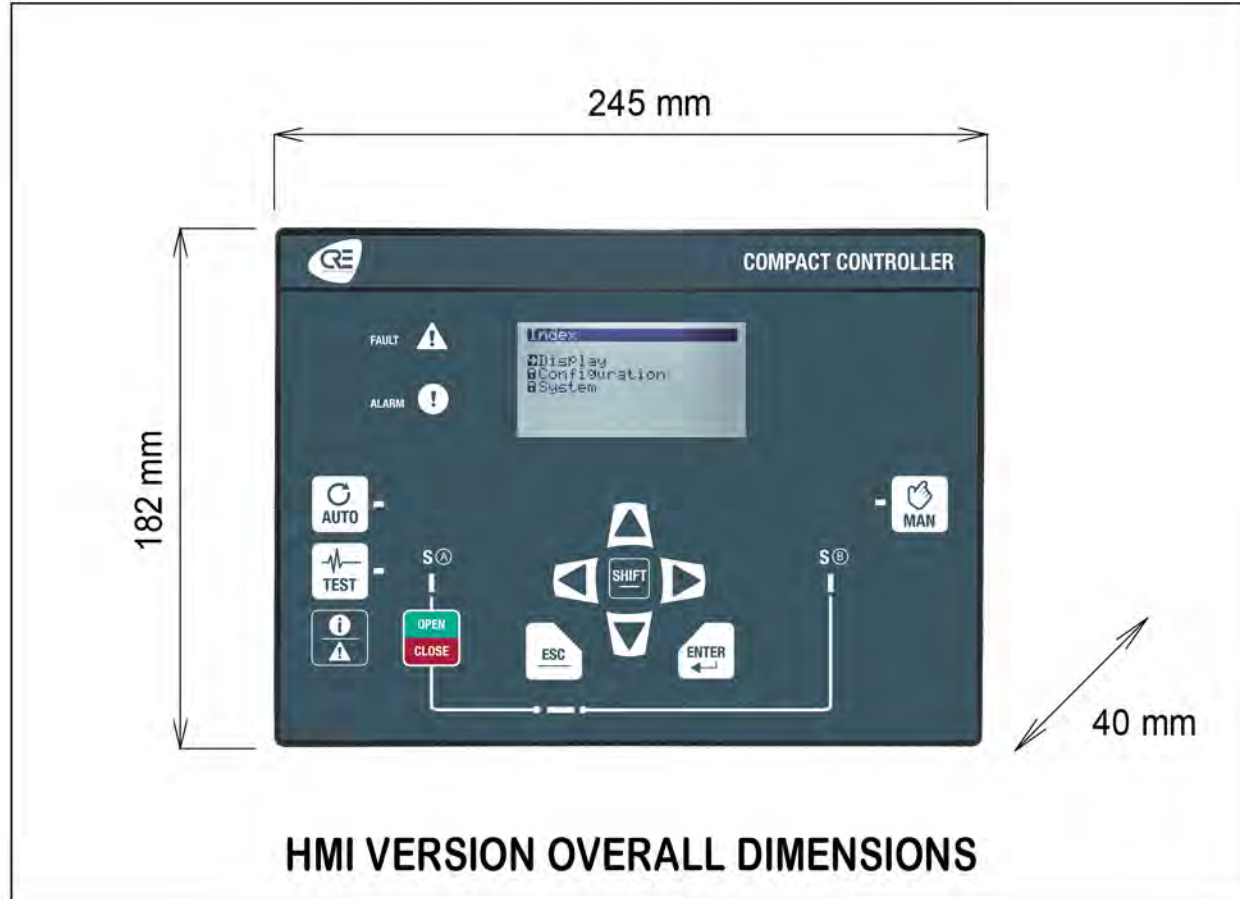


Created: 17/03/2022
 Drawing n°: A56-BTB-00 / 10 - DWG - 001
 Drawn: DB

REVISION	DATE	MODIFICATION	DRAWN
A	19/05/2019	FIRST RELEASE	DB

BTB COMPACT HMI / CORE
 STANDARD WIRING SCHEMATICS

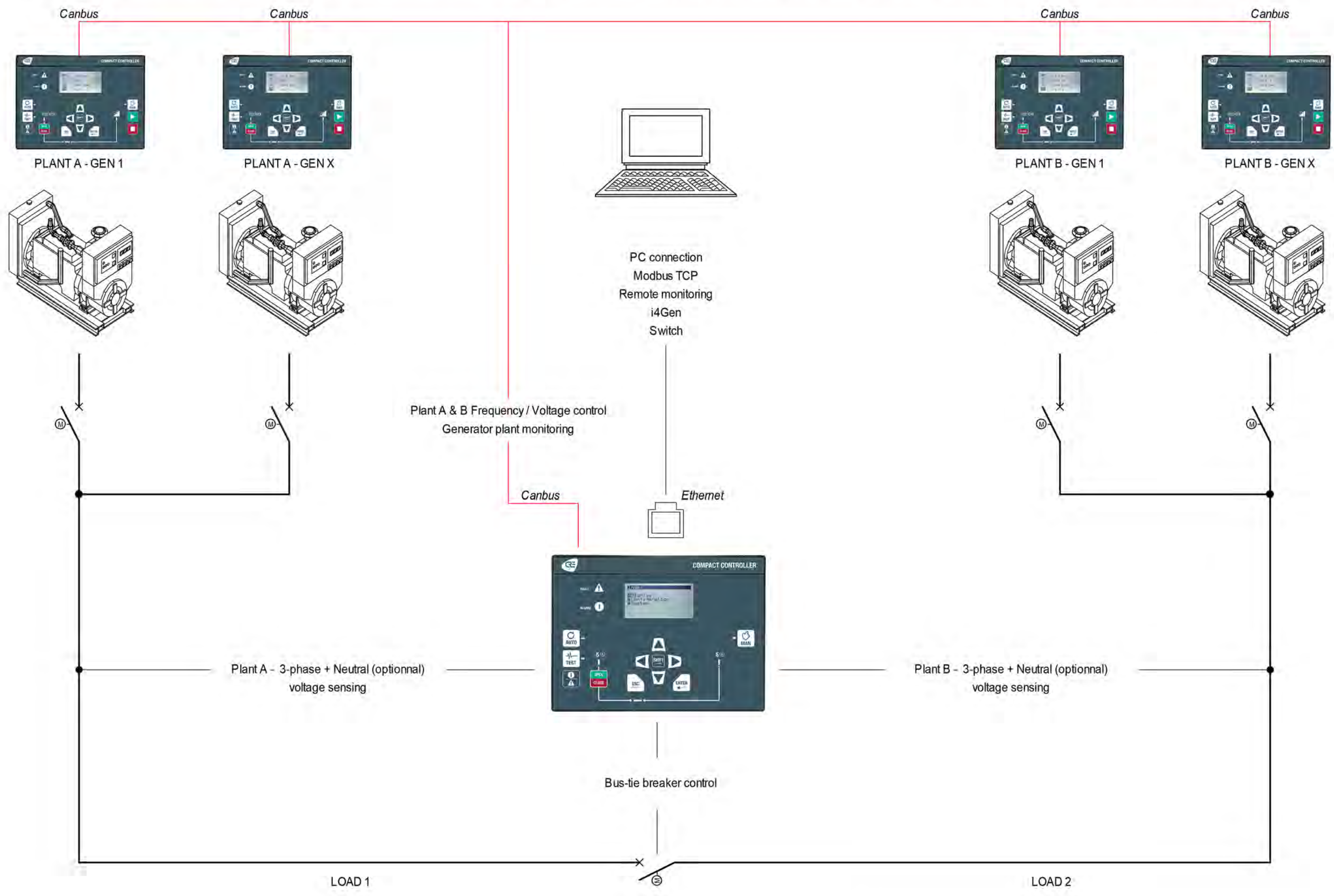
Module Rear / Core view



Created: 17/03/2022				
Drawing n°: A56-BTB-00 / 10 - DWG - 001				
Drawn: DB				
REVISION	DATE	MODIFICATION	DRAWN	
A	19/05/2019	FIRST RELEASE	DB	

BTB COMPACT HMI / CORE
STANDARD WIRING SCHEMATICS

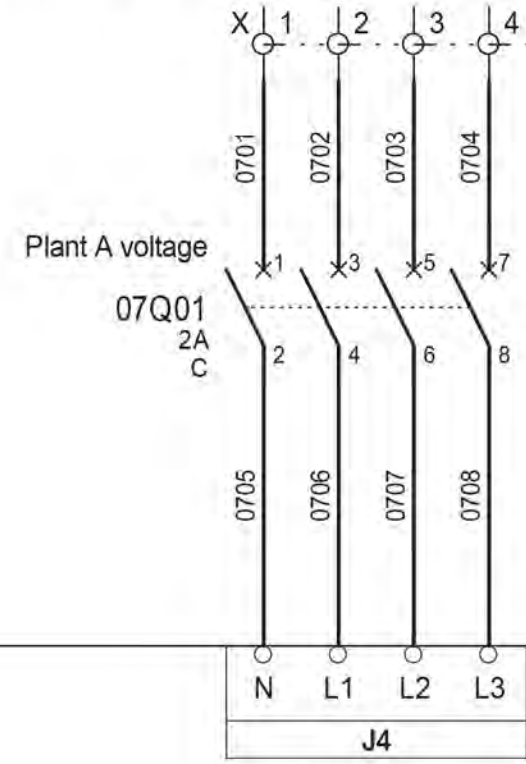
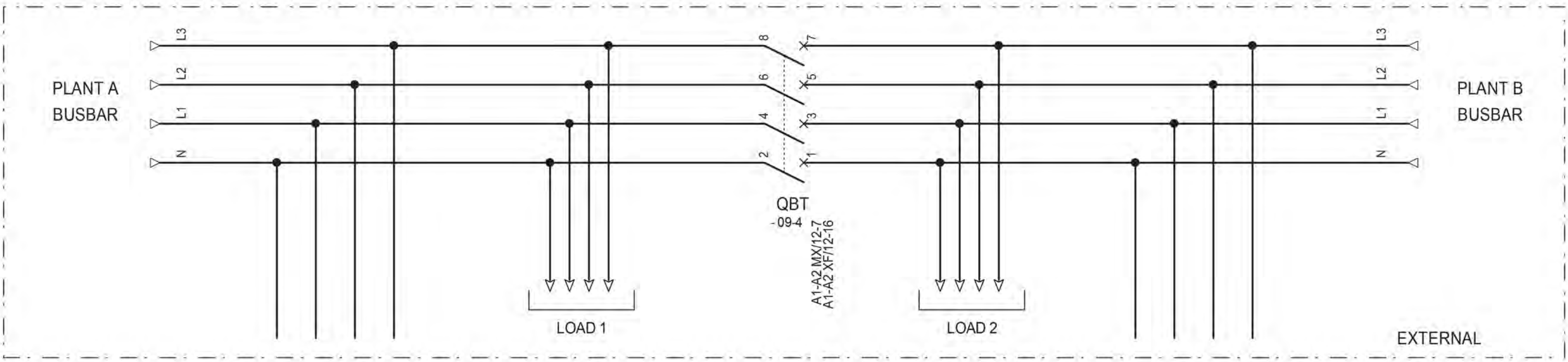
Dimensions / Panel cut



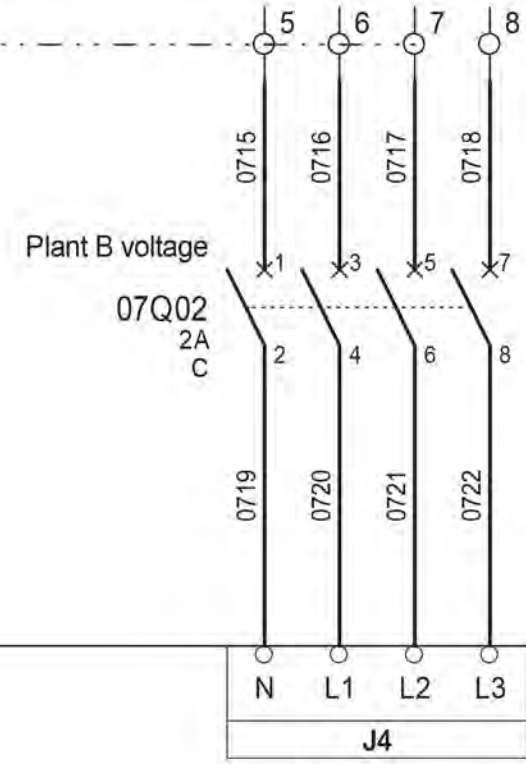
Created: 17/03/2022				
Drawing n°: A56-BTB-00 / 10 - DWG - 001				
Drawn: DB	A	19/05/2019	FIRST RELEASE	DB
	REVISION	DATE	MODIFICATION	DRAWN

BTB COMPACT HMI / CORE
STANDARD WIRING SCHEMATICS

Single line diagram



SA voltage
80...500Vac
35...75Hz
* Note 1



SB voltage
80...500Vac
35...75Hz
* Note 1

BTB COMPACT

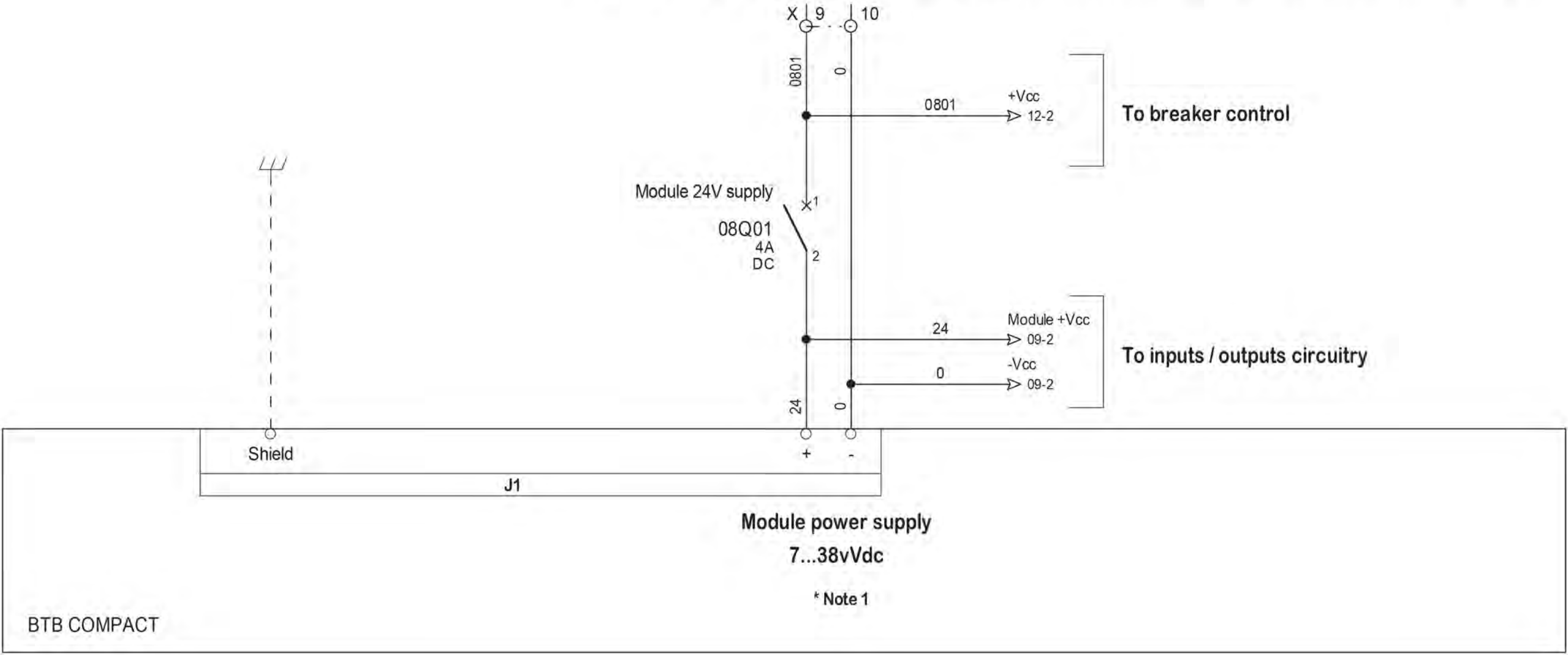
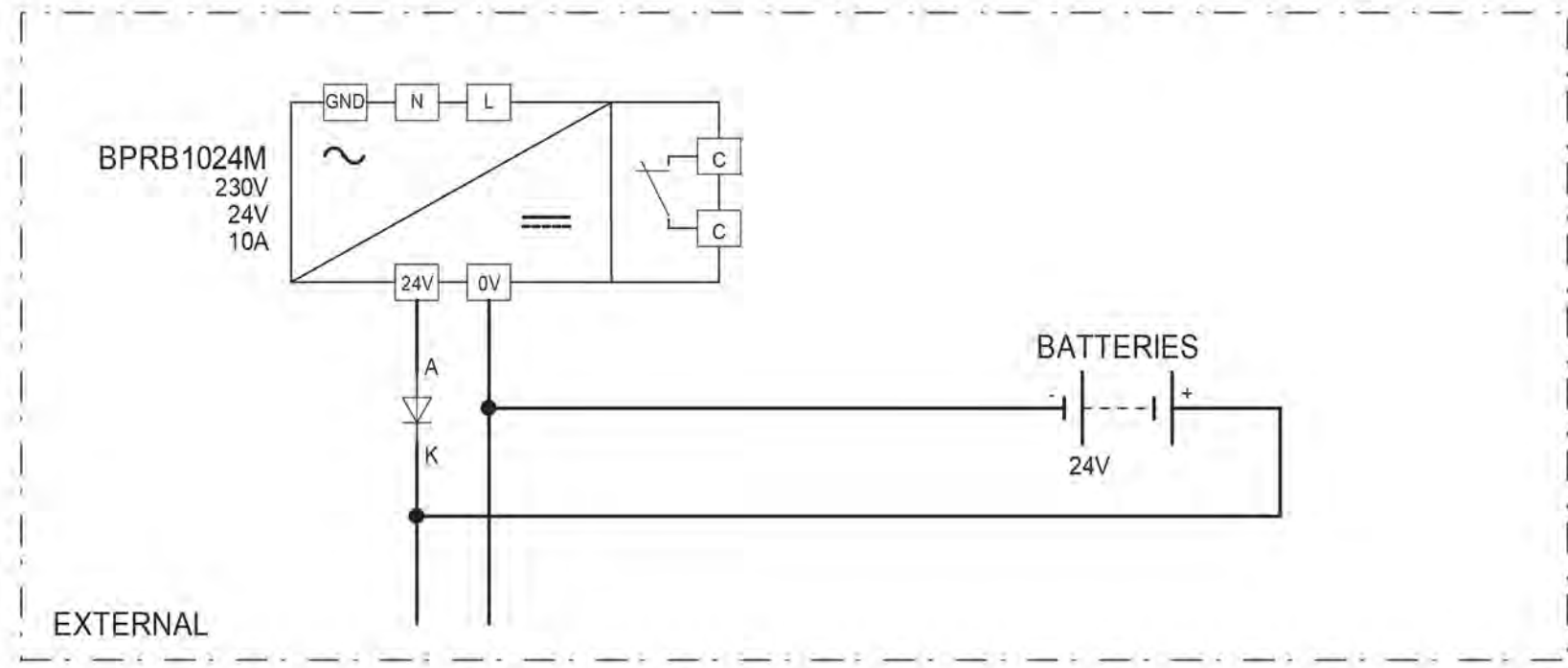
* Note1: Shall voltage transformers be required, refer to technical documentation



Created: 17/03/2022				
Drawing n°: A56-BTB-00 / 10 - DWG - 001				
Drawn: DB	A	19/05/2019	FIRST RELEASE	DB
	REVISION	DATE	MODIFICATION	DRAWN

BTB COMPACT HMI / CORE
STANDARD WIRING SCHEMATICS

Voltages and currents sensing



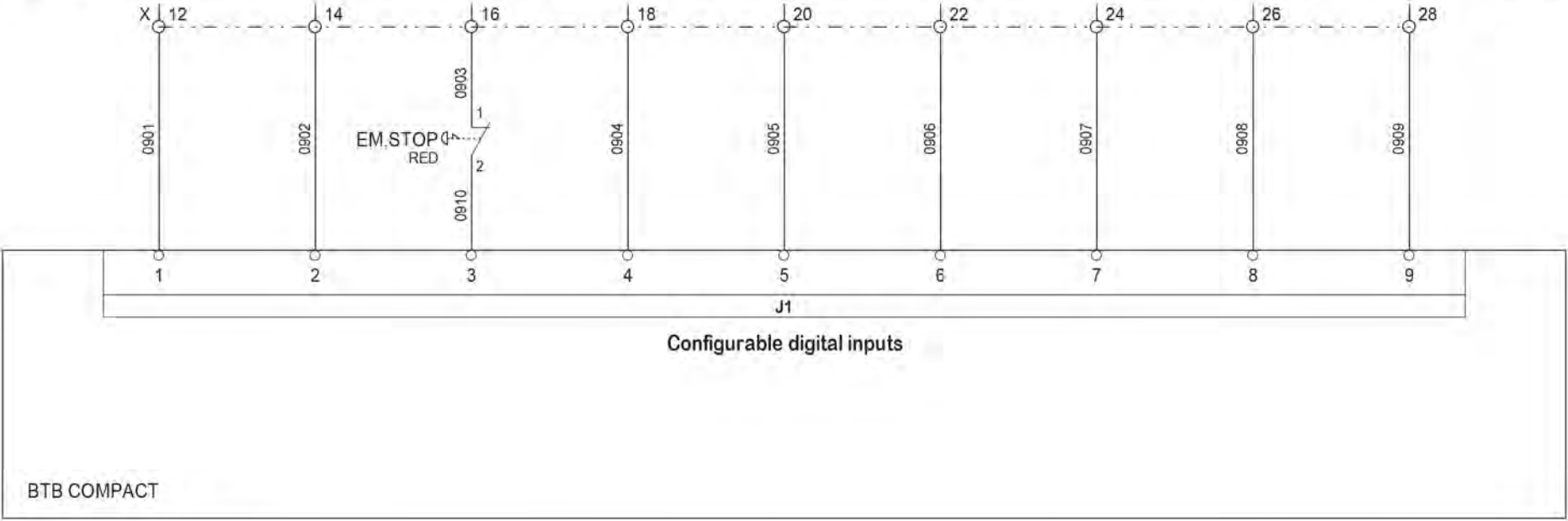
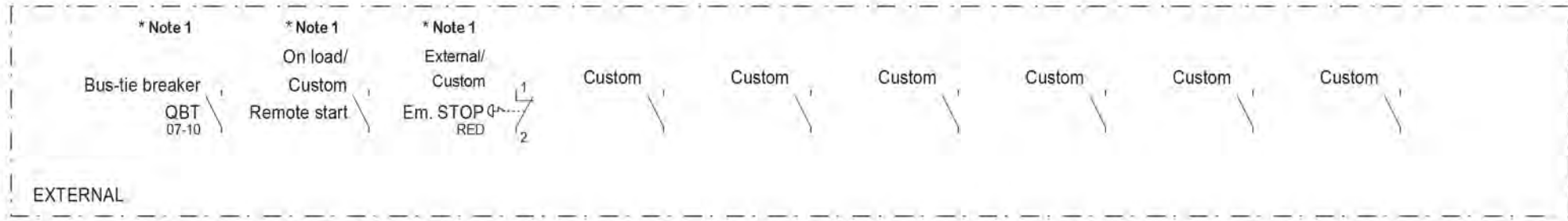
* Note1: Example given with use of a 24Vdc battery charger, but applies identically with 12Vdc



Created: 17/03/2022				
Drawing n°: A56-BTB-00 / 10 - DWG - 001				
Drawn: DB	A	19/05/2019	FIRST RELEASE	DB
	REVISION	DATE	MODIFICATION	DRAWN

BTB COMPACT HMI / CORE
STANDARD WIRING SCHEMATICS

Power supply and shield connection



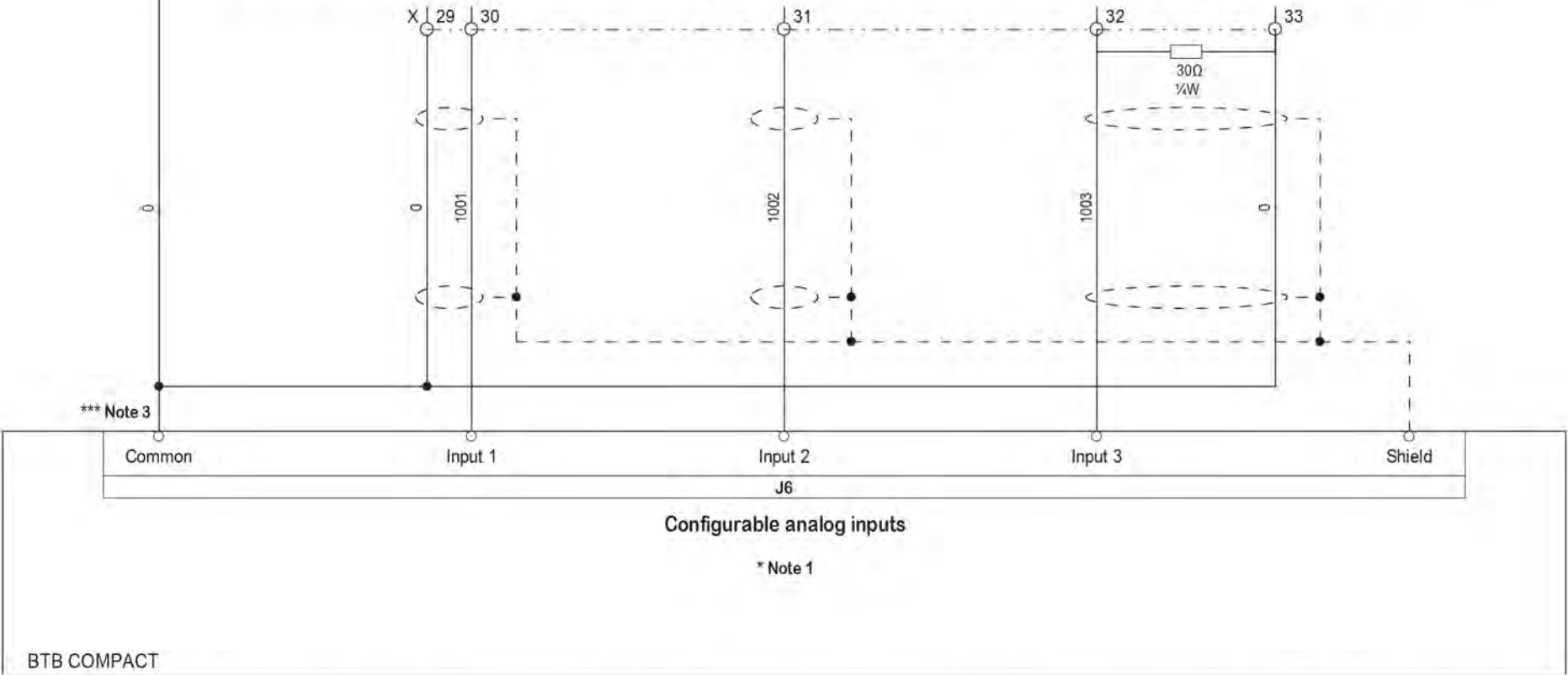
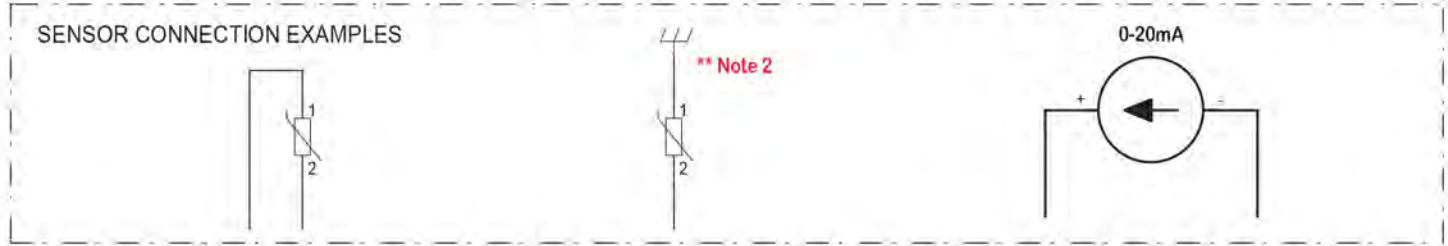
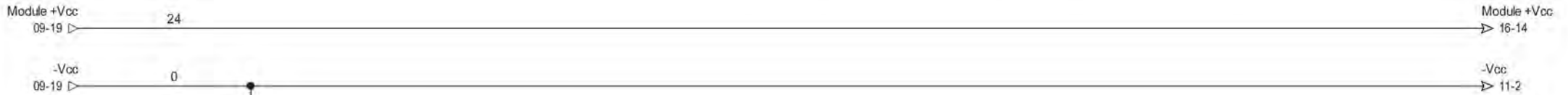
* Note 1: Default setting, can be adjusted via PC software as desired



Created: 17/03/2022				
Drawing n°: A56-BTB-00 / 10 - DWG - 001				
Drawn: DB	A	19052019	FIRST RELEASE	DB
	REVISION	DATE	MODIFICATION	DRAWN

BTB COMPACT HMI / CORE
STANDARD WIRING SCHEMATICS

Digital inputs



* Note1: Analog inputs can be used with resistive sensors (max. range 0-500 Ohms), with external 20mA current transducers fitted with a 30-ohm 1/4 Watt resistor or as additional digital inputs
 ** Note2: Ensure engine body and 0Vcc are connected in case of use of a single-wire sensor
 *** Note3: The common analog input terminal must have a direct connection to the -Batt terminal of the controller

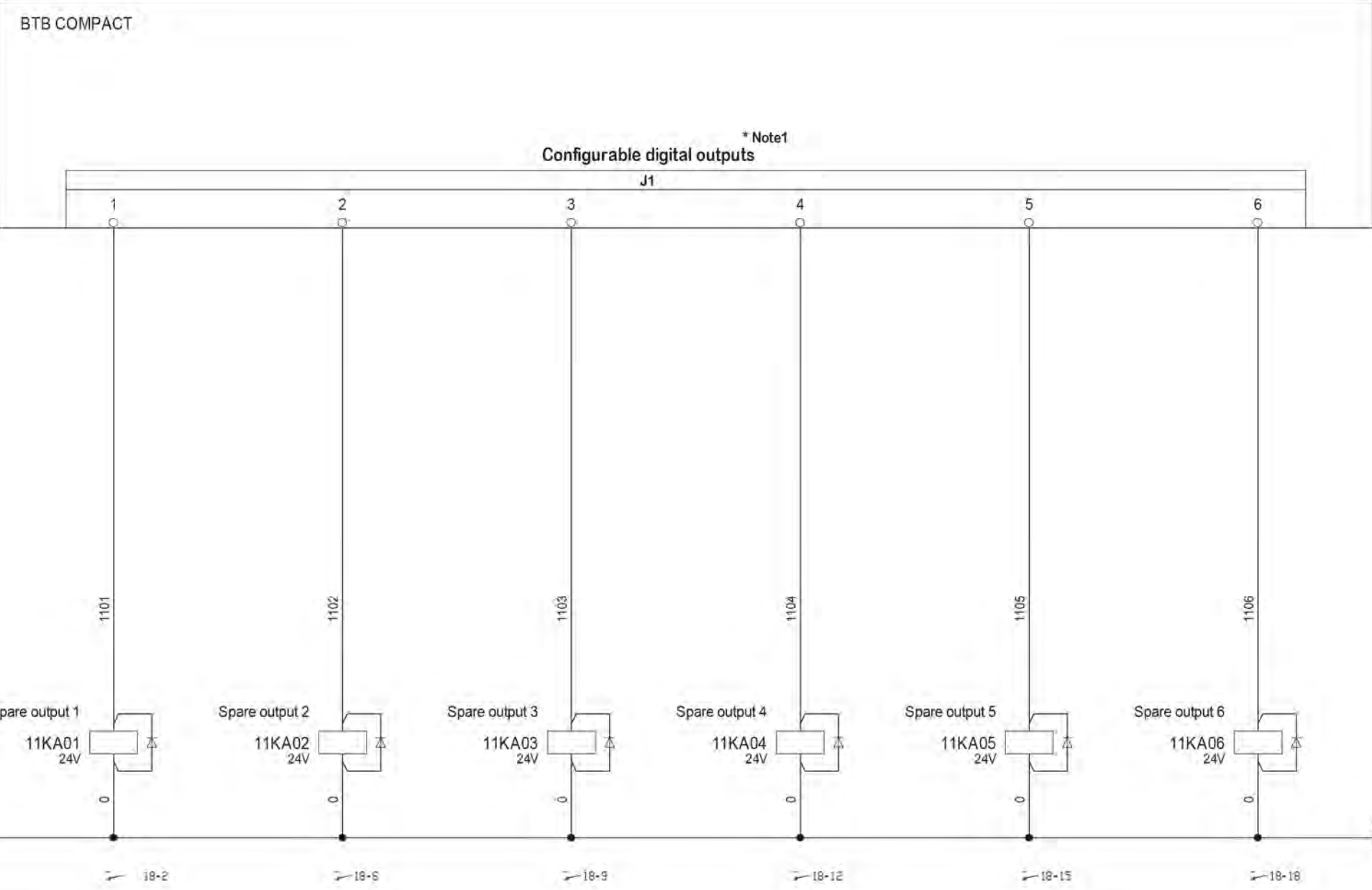


Created: 17/03/2022
 Drawing n°: A56-BTB-00 / 10 - DWG - 001
 Drawn: DB

REVISION	DATE	MODIFICATION	DRAWN
A	19/05/2019	FIRST RELEASE	DB

BTB COMPACT HMI / CORE
 STANDARD WIRING SCHEMATICS

Analog inputs



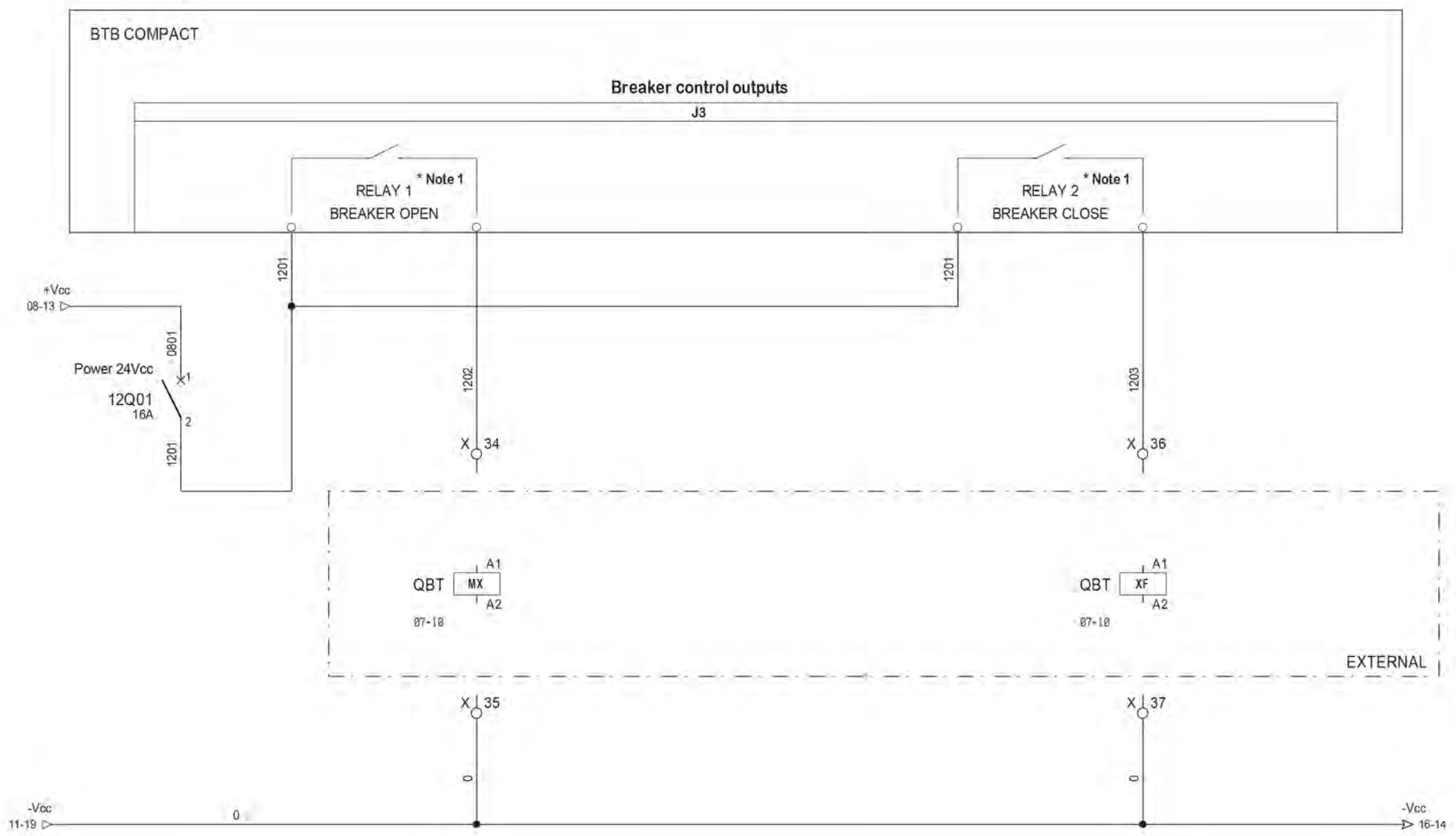
* Note1: Maximum output current is 1.8 Amps



Created: 17/03/2022			
Drawing n°: A56-BTB-00 / 10 - DWG - 001			
Drawn: DB			
REVISION	DATE	MODIFICATION	DRAWN
A	19/05/2019	FIRST RELEASE	DB

**BTB COMPACT HMI / CORE
STANDARD WIRING SCHEMATICS**

Digital outputs



* Note1: Default functions, adjustable via PC software



Created: 17/03/2022				
Drawing n°: A56-BTB-00 / 10 - DWG - 001				
Drawn: DB	A	19052019	FIRST RELEASE	DB
	REVISION	DATE	MODIFICATION	DRAWN

BTB COMPACT HMI / CORE
STANDARD WIRING SCHEMATICS

Breaker control

NOT USED



Created: 17/03/2022				
Drawing n°: A56-BTB-00 / 10 - DWG - 001				
Drawn: DB	A	19/05/2019	FIRST RELEASE	DB
	REVISION	DATE	MODIFICATION	DRAWN

BTB COMPACT HMI / CORE
STANDARD WIRING SCHEMATICS

Speed sensing

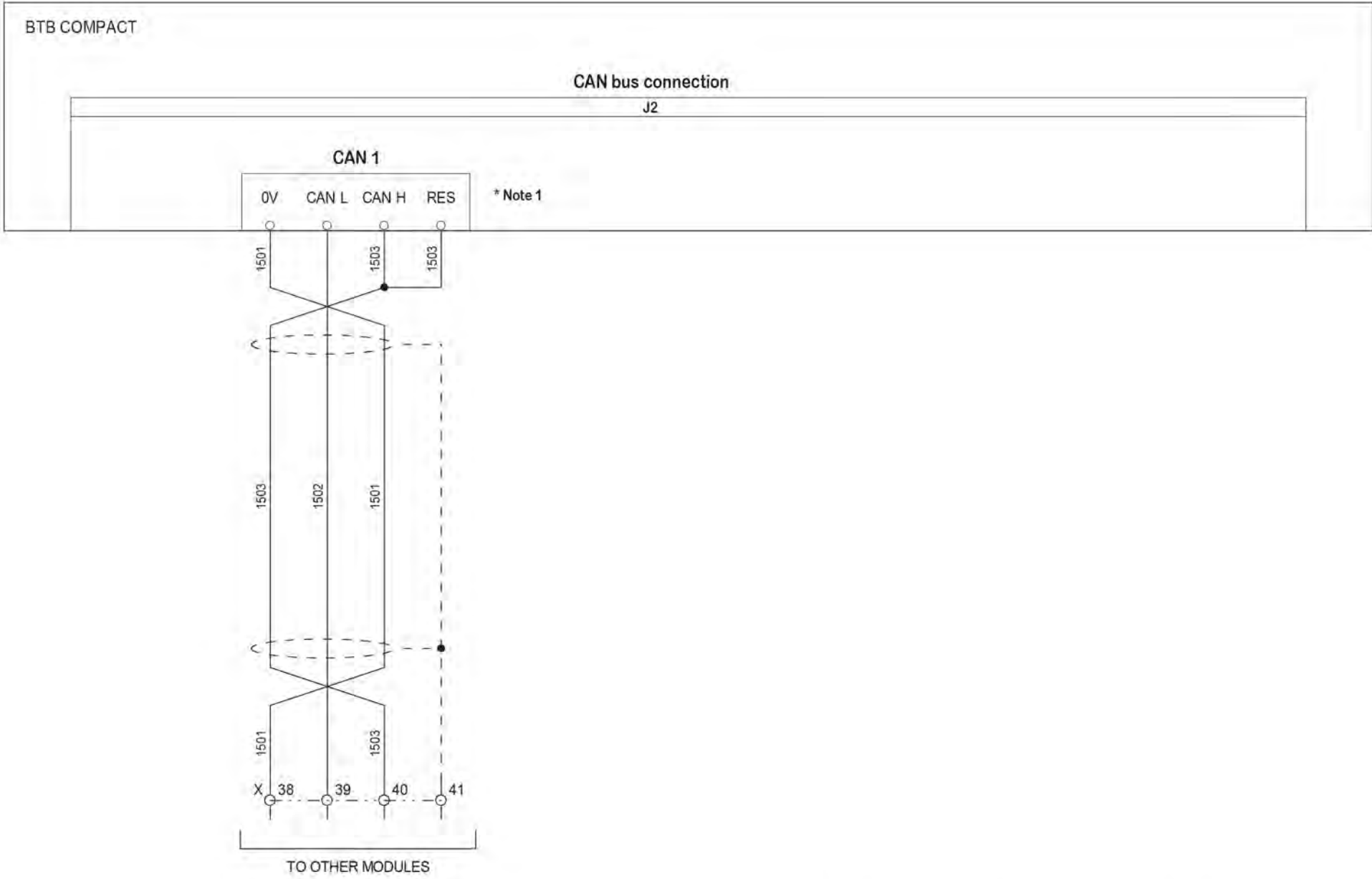
NOT USED



Created: 17/03/2022				
Drawing n°: A56-BTB-00 / 10 - DWG - 001				
Drawn: DB	A	19/05/2019	FIRST RELEASE	DB
	REVISION	DATE	MODIFICATION	DRAWN

BTB COMPACT HMI / CORE
STANDARD WIRING SCHEMATICS

Speed & voltage control



** Note 2

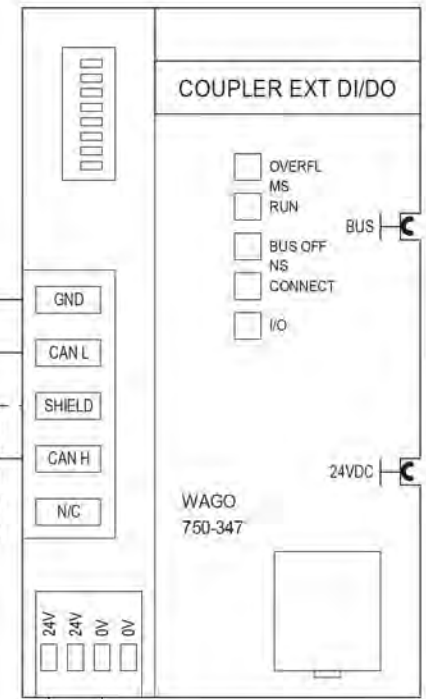
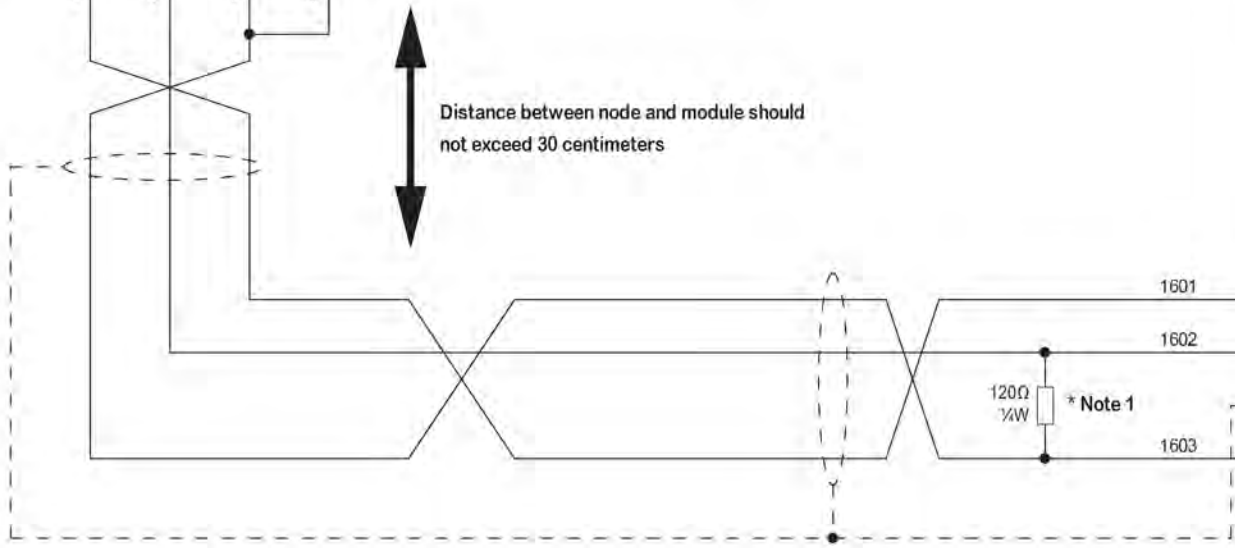
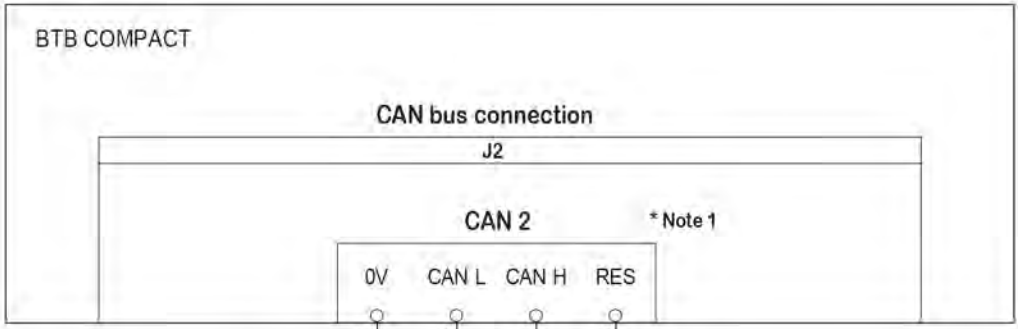
* Note1: Embedded 120-ohm resistance to be bridged to CAN H terminal on first and last bus module only
 ** Note2: CAN 1 is dedicated to inter-module communication. CAN options are available on CAN2



Created: 17/03/2022				
Drawing n°: A56-BTB-00 / 10 - DWG - 001				
Drawn: DB	A	19052019	FIRST RELEASE	DB
	REVISION	DATE	MODIFICATION	DRAWN

BTB COMPACT HMI / CORE
 STANDARD WIRING SCHEMATICS

CAN 1 connection



Module +Vcc 10-19
-Vcc 12-19

* Note1: Bus end 120-ohm resistor to be placed between CAN L and CAN H terminal on last equipment only



Created: 17/03/2022				
Drawing n°: A56-BTB-00 / 10 - DWG - 001				
Drawn: DB	A	19/05/2019	FIRST RELEASE	DB
	REVISION	DATE	MODIFICATION	DRAWN

**BTB COMPACT HMI / CORE
STANDARD WIRING SCHEMATICS**

CAN 2 connection

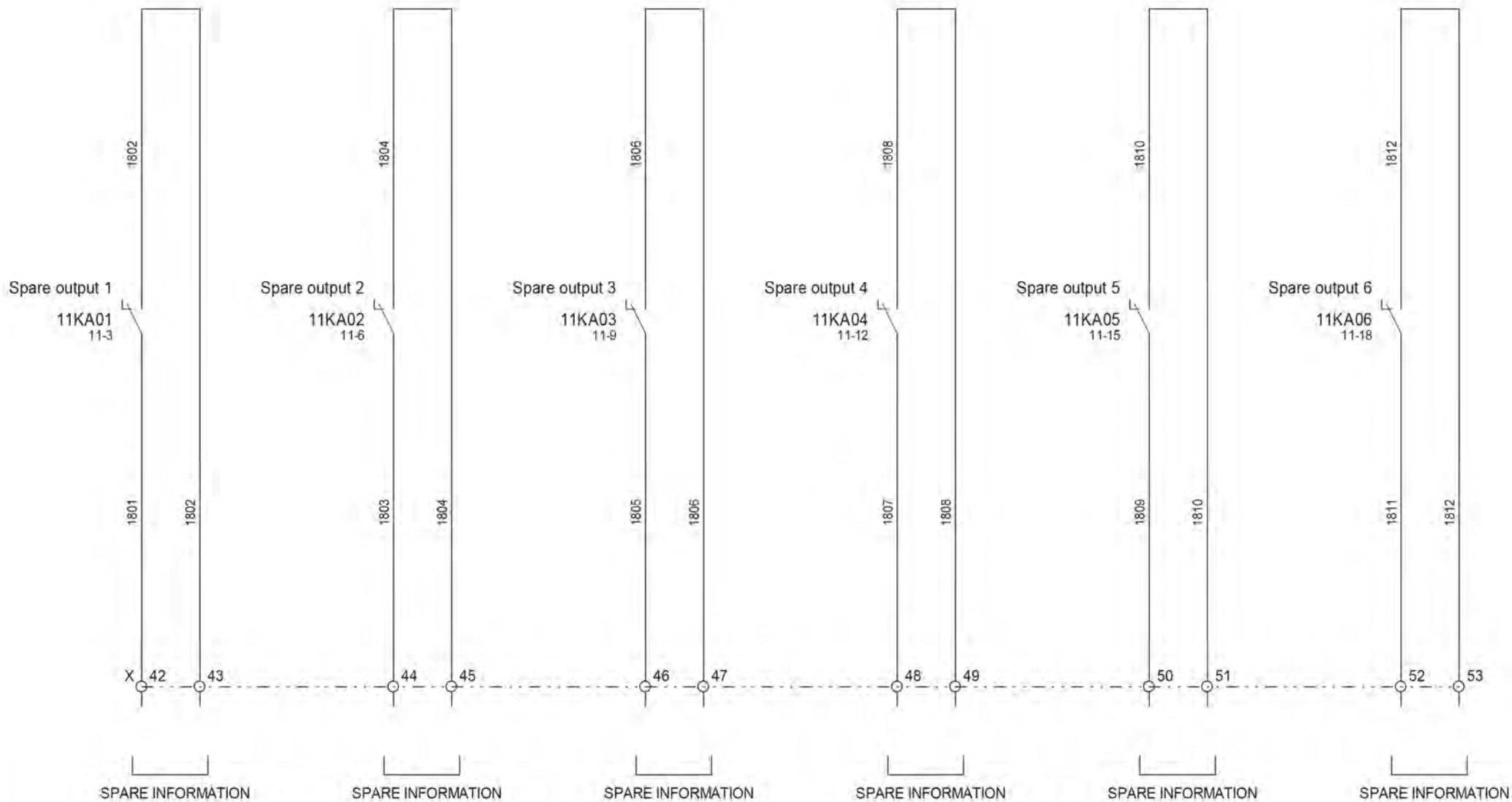
NOT USED



Created: 17/03/2022				
Drawing n°: A56-BTB-00 / 10 - DWG - 001				
Drawn: DB	A	19/05/2019	FIRST RELEASE	DB
	REVISION	DATE	MODIFICATION	DRAWN

BTB COMPACT HMI / CORE
STANDARD WIRING SCHEMATICS

Engine control



Created: 17/03/2022				
Drawing n°: A56-BTB-00 / 10 - DWG - 001				
Drawn: DB	A	19052019	FIRST RELEASE	DB
	REVISION	DATE	MODIFICATION	DRAWN

BTB COMPACT HMI / CORE
STANDARD WIRING SCHEMATICS

Digital output terminals