



0	Edition originale	23/03/2017	MD	YB
INDICE	MODIFICATION	DATE	DESSINE	APPROUVE



Website: www.cretechnology.com
 Email: info@cretechnology.com
 Email: support@cretechnology.com
 SKYPE: [support-cretechnology.com](https://www.skype.com/partner/cretechnology.com)

DESSINATEUR: MD

DATE DE CREATION: 23/03/2017

AFFAIRE N°:

CRE TECHNOLOGY

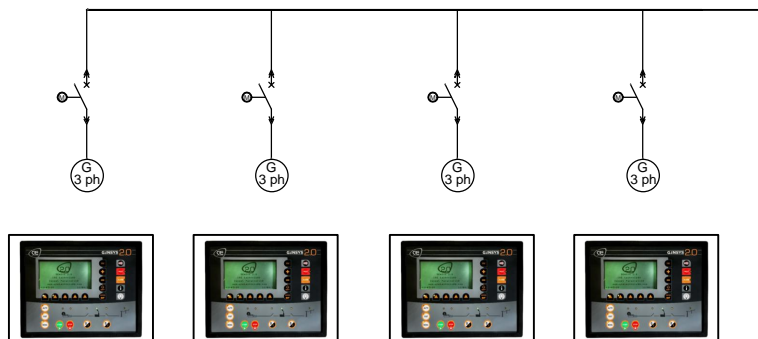
130 , allée Charles-Victor Naudin Zone des Templiers Sophia-Antipolis
 Zone des Templiers Sophia-Antipolis
 06410 BIOT-FRANCE

Tél: (0033) 492 38 86 82

Fax: (0033) 492 38 86 83

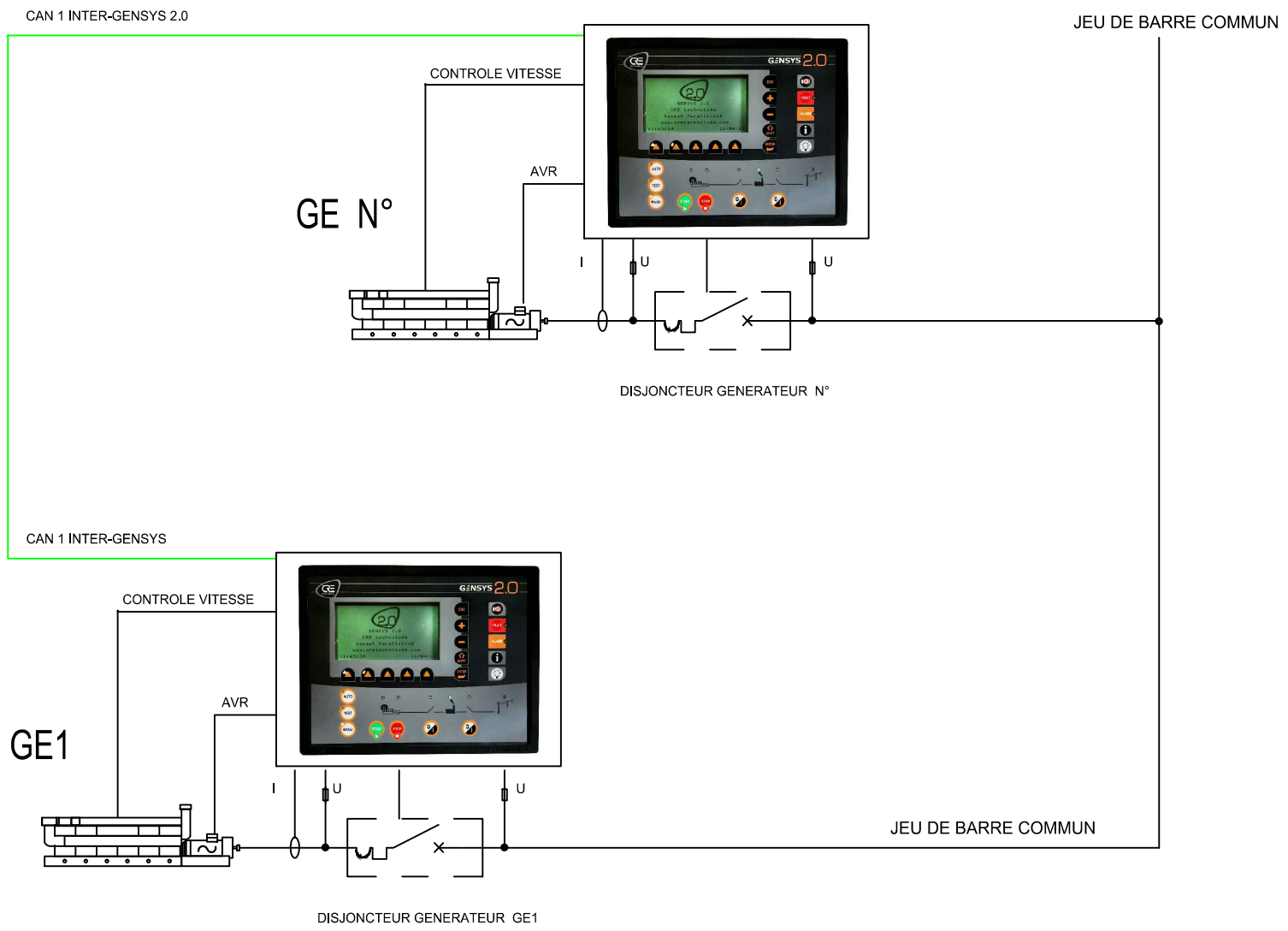
GENSYS 2.0

EXEMPLE DE SCHEMA DE CABLAGE



GENSYS 2.0

01/13



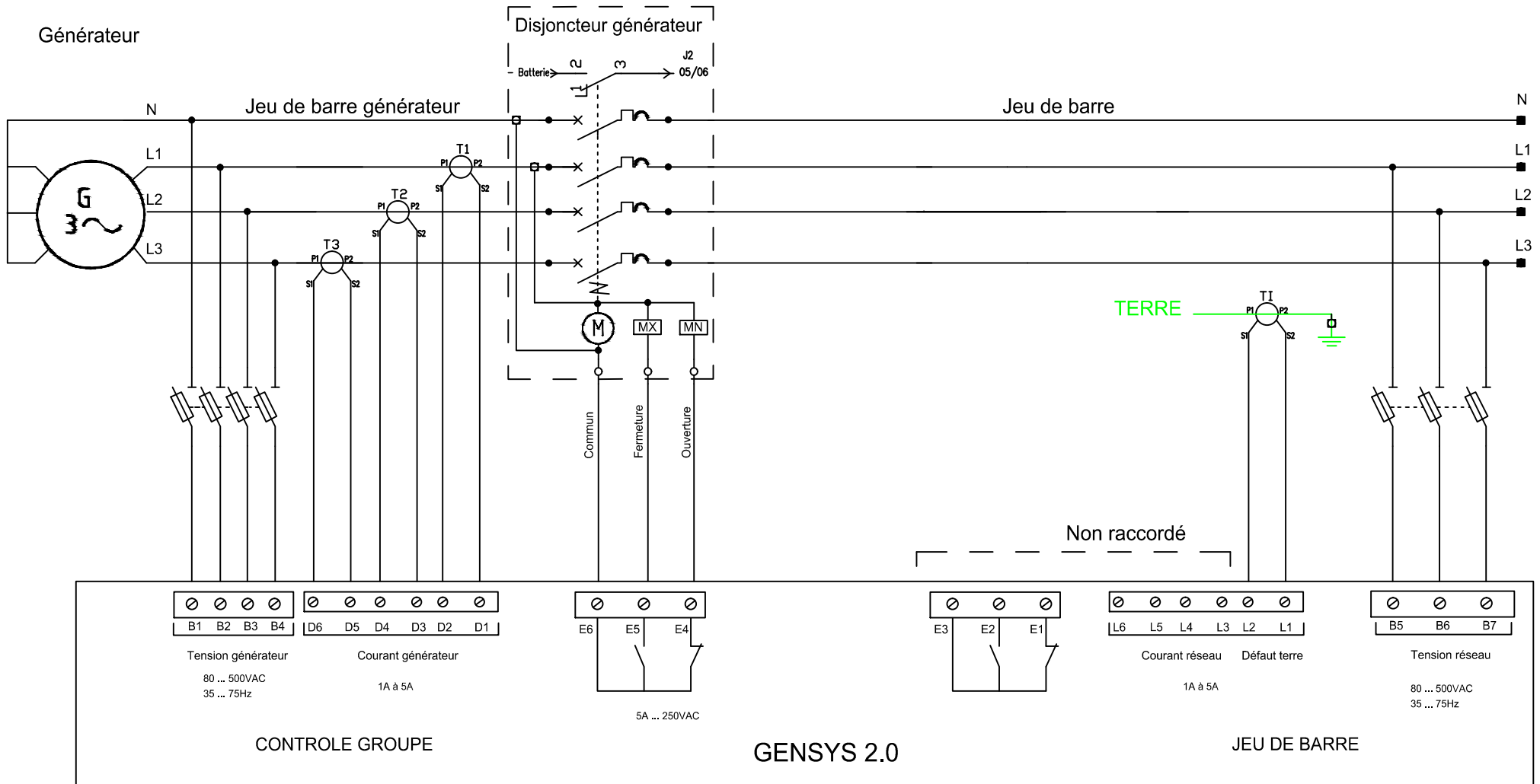
DESSINE :	M.D				
VERIFIE :	YB				
DATE DE CREATION :	0	23/03/2017	Edilton originale	MD	
	23/03/2017	INDICE	DATE	MODIFICATION	DES.

Schéma couplage générateur

Document n° : Schéma

Schéma unifilaire

Raccordement GENSYS 2.0 sur JDB commun (Couplage entre groupes)



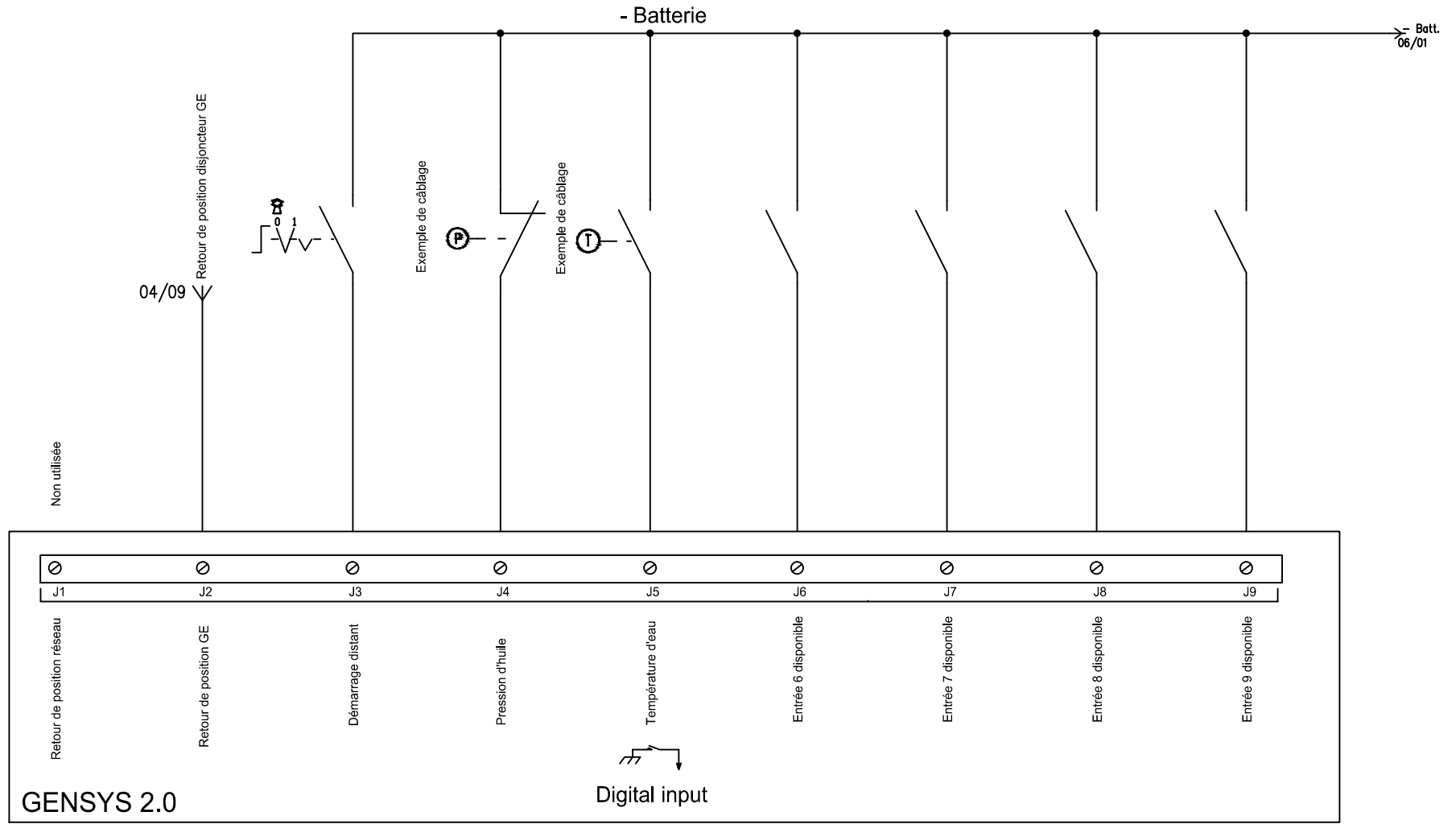
DESSINE :	M.D				
VERIFIE :	YB				
DATE DE CREATION :	23/03/2017	0	23/03/2017	Edition originale	MD
	23/03/2017	INDICE	DATE	MODIFICATION	DES.

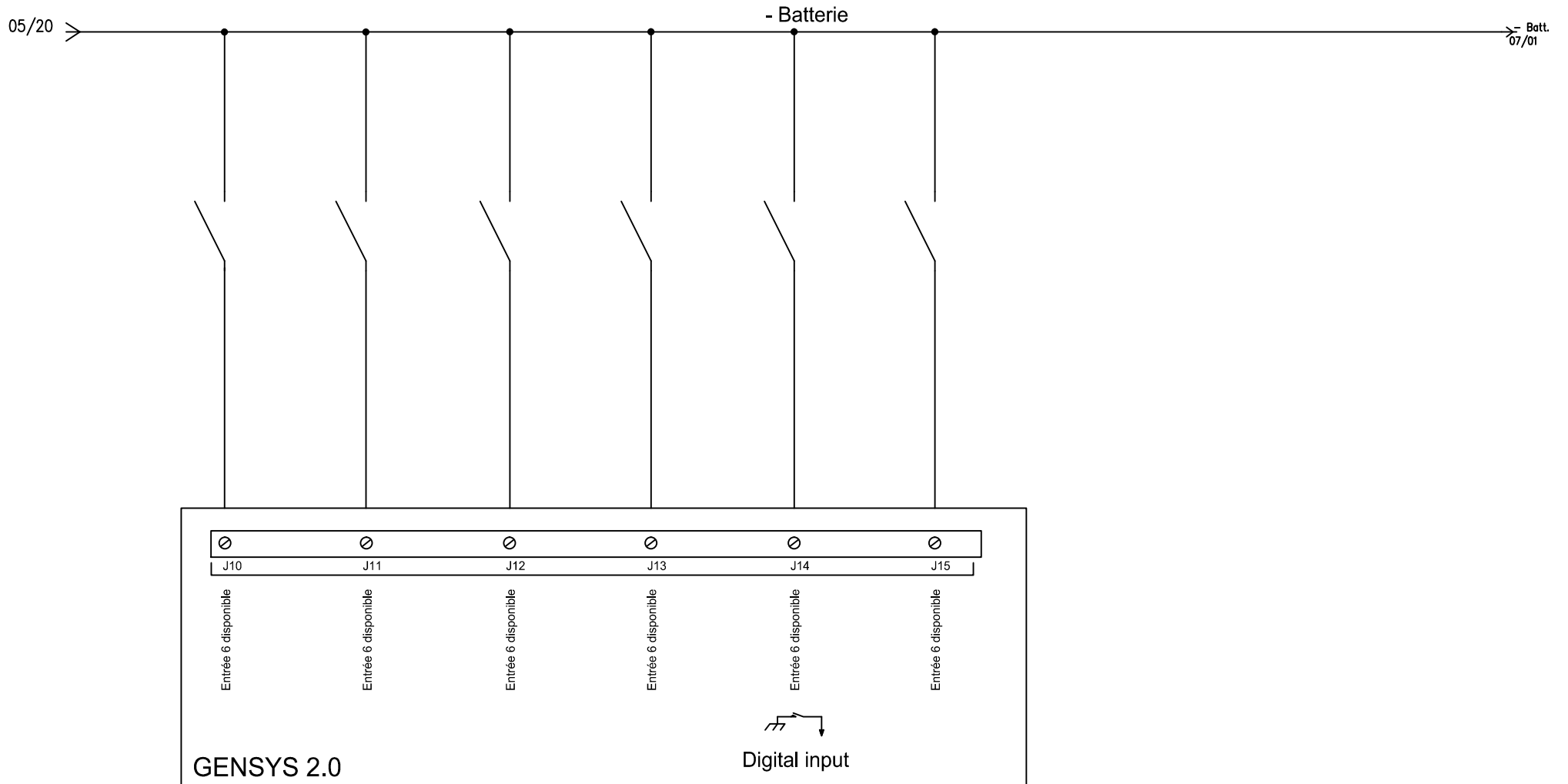
Schéma couplage générateur

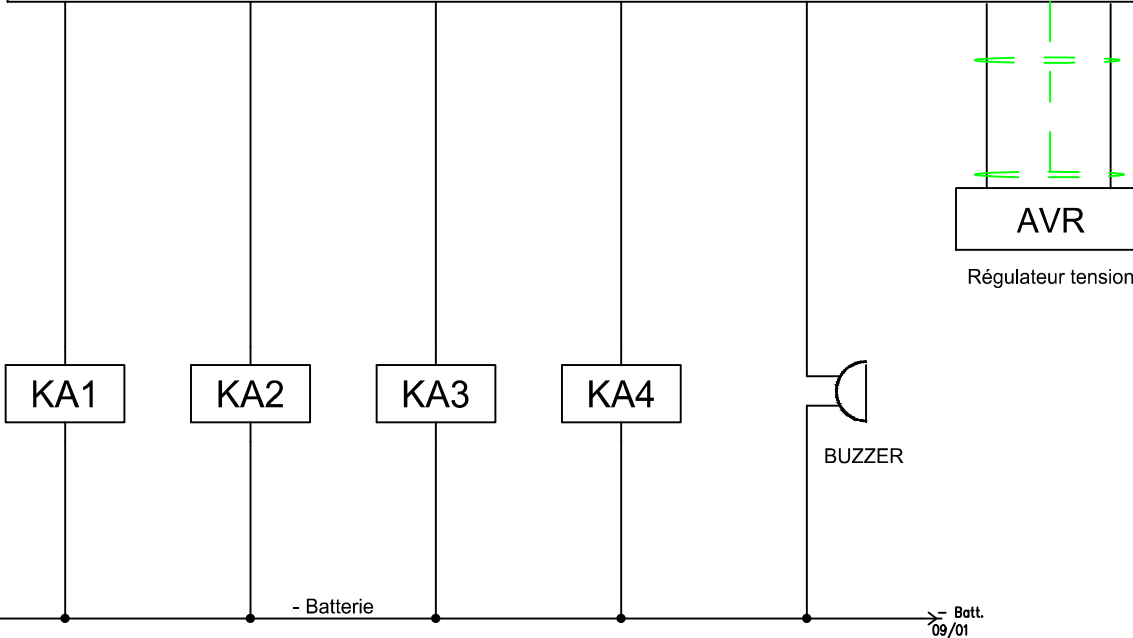
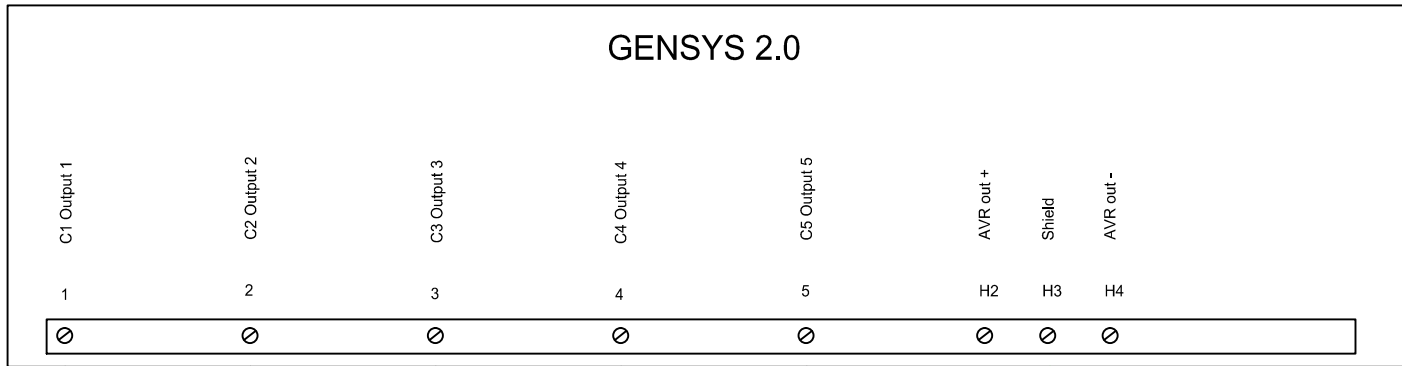
Document n° :Schéma

Câblage de puissance

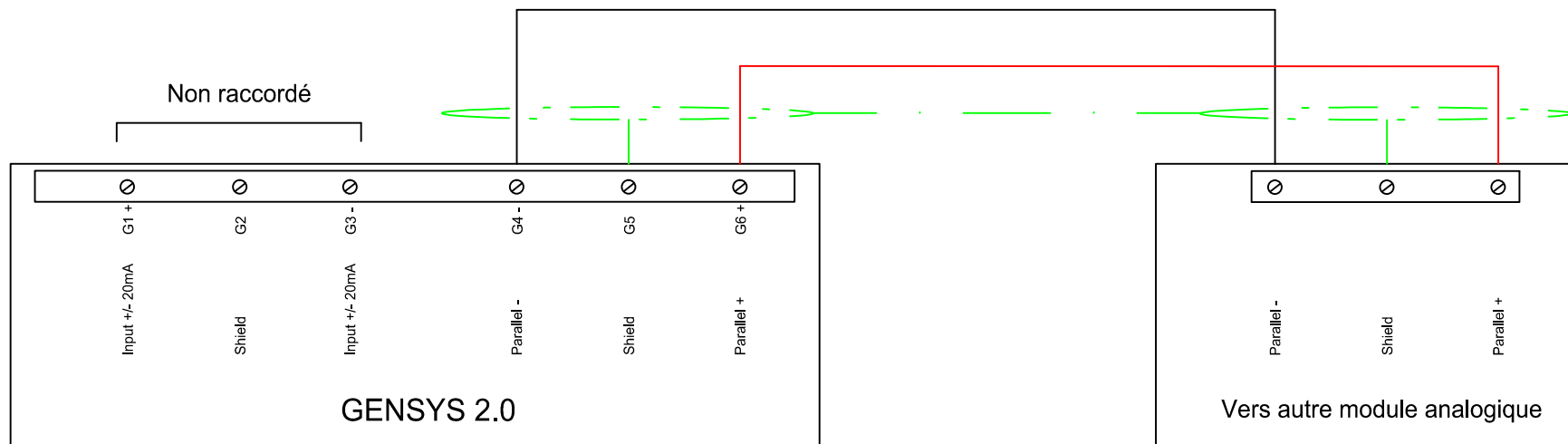
FOLIO
04
◀ 03 05 ▶



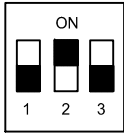




Répartition par lignes analogiques 0-3V (si pas de connexion bus CAN)



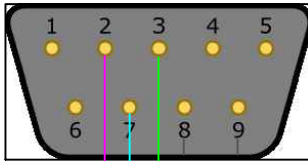
Interrupteur
Résistance
ON 120 Ohms



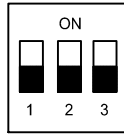
COM

- 1 NC
- 2 CAN-L
- 3 GROUND-1
- 4 NC
- 5 GROUND-2
- 6 GROUND-1
- 7 CAN-H
- 8 NC
- 9 NC

COM 1 GENSYS



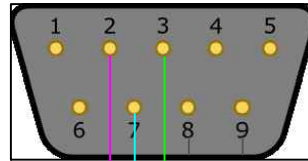
Interrupteur
Résistance
ON 120 Ohms



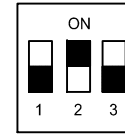
COM

- 1 NC
- 2 CAN-L
- 3 GROUND-1
- 4 NC
- 5 GROUND-2
- 6 GROUND-1
- 7 CAN-H
- 8 NC
- 9 NC

COM 1 GENSYS N°



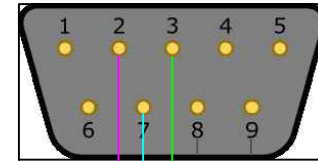
Interrupteur
Résistance
ON 120 Ohms



COM

- 1 NC
- 2 CAN-L
- 3 GROUND-1
- 4 NC
- 5 GROUND-2
- 6 GROUND-1
- 7 CAN-H
- 8 NC
- 9 NC

COM 1 GENSYS fin de ligne



GROUND-1

CAN-H

CAN-L

Connexion des autres GENSYS 2.0 sur la ligne bus CAN

Exemple de mise en service des résistances de 120 Ohms de terminaison par interrupteur



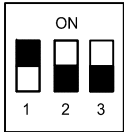
DESSINE :	M.D				
VERIFIE :	YB				
DATE DE CREATION :	27/03/2017	0	27/03/2017	Edition originale	MD
		INDICE	DATE	MODIFICATION	DES.

Schéma couplage générateur

Document n° :Schéma

COM1 - Connexion CAN bus inter GENSYS 2.0

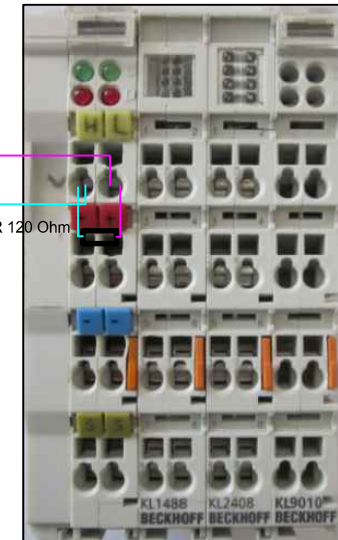
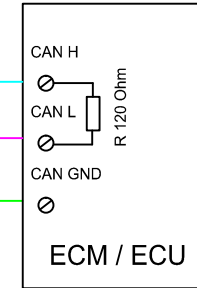
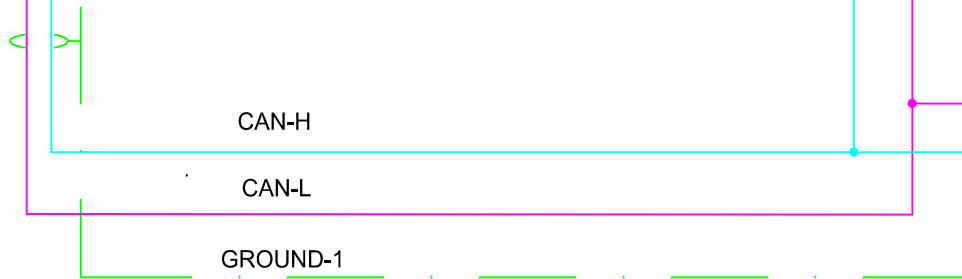
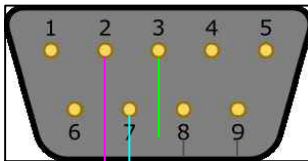
Interrupteur
Résistance
ON 120 Ohms



COM

- 1 NC
- 2 CAN-L
- 3 GROUND-1
- 4 NC
- 5 GROUND-2
- 6 GROUND-1
- 7 CAN-H
- 8 NC
- 9 NC

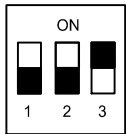
COM 2 CAN OPEN



La résistance de terminaison de 120 Ohms doit être mise en service aux deux extrémités

Non disponible sur GENSYS 2.0 LT

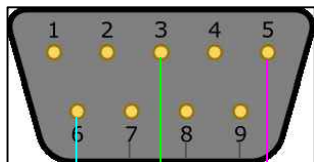
Interrupteur
Résistance
ON 120 Ohms



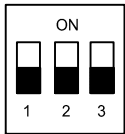
COM

- 1 NC
- 2 NC
- 3 GROUND
- 4 GROUND
- 5 B
- 6 A
- 7 NC
- 8 NC
- 9 GROUND

COM 5 GENSYS RS485

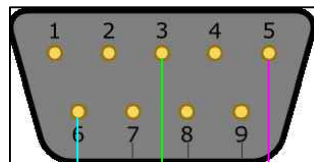


Interrupteur
Résistance
ON 120 Ohms



COM

COM 5 GENSYS RS485 gensys N°



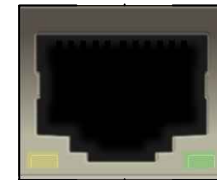
B

GROUND-1

A

Connexion des autres GENSYS 2.0 sur la ligne Modbus RTU

COM 4 RJ45



ETHERNET
TCP/IP
Modbus TCP
CRE Config.

GTC/GTB

Modbus RTU

Les résistances de terminaison de 120 Ohms doit etre mise en service au deux extrémités



DESSINE :	M.D				
VERIFIE :	YB				
DATE DE CREATION :	27/03/2017	0	27/03/2017	Edition originale	MD
		INDICE	DATE	MODIFICATION	DES.

Schéma couplage générateur

Document n° : Schéma

COM 5 - Raccordement Modbus RTU