



Biogas plant is the GAEC VDLV 590KVA facility dedicated to energy production using only animal biological wastes. This facility is subject to a specific contract with the company ERDF (French company in charge of the national grid management). The generator is installed in permanent paralleling mode and the plant includes a very sophisticated adaptation of the active and reactive power management; control of these power levels, a long-term secured data archiving and management of auxiliaries.

Our solution

CRE TECHNOLOGY provides **GENSYS 2.0** with CANopen expansion module with 32 digital outputs, 32 digital inputs, 4 analog inputs and 4 outputs for processing signals 4-20mA and 0-20mA. In addition to the equipment CRE TECHNOLOGY also provides technical expertise

and is involved in the development of the project through its engineering application service.

The **GENSYS 2.0** manage the following features:

- Synchronization of the generator by contact outputs,
- Management of active power set point and power factor based on the acquisition of biogas quality, power quality and production demand,
- Control of auxiliaries,
- Data sharing with engine controller through
- Modbus communication and analog signals,
- Management of electrical protections,
- Manual mode,
- Secured archiving via SD card for a period of 15 years.

8GB SD card storage

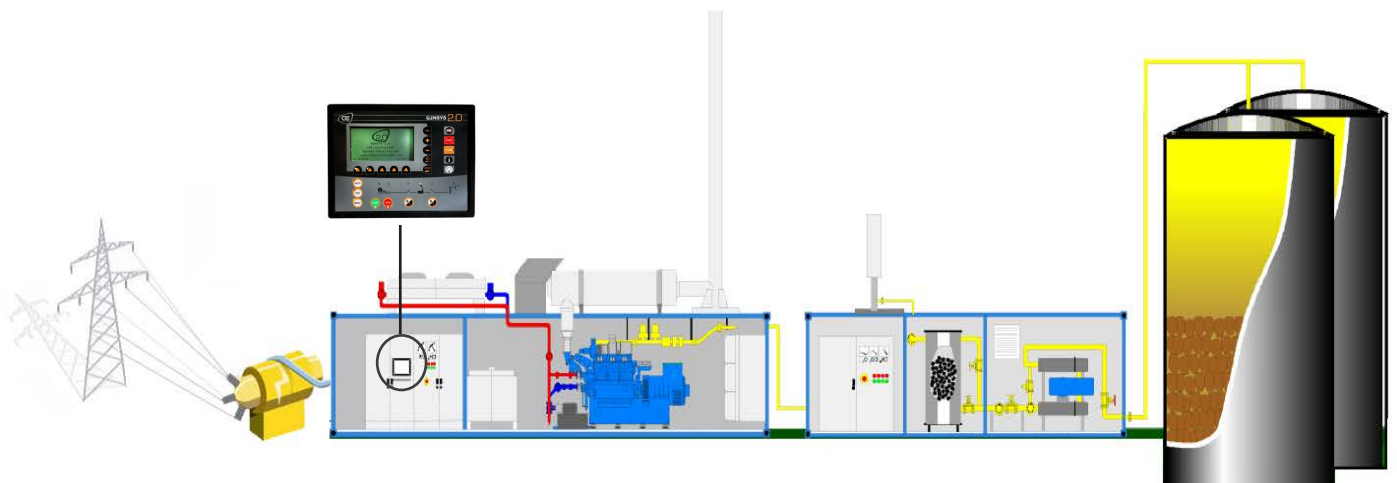
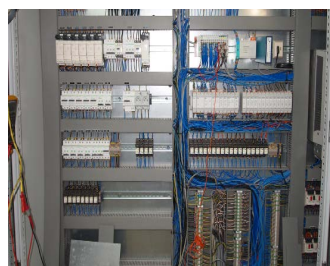
For this installation the customer required a secured archiving system for a 15 years long data recording on biogas and ERDF network power.

CRE TECHNOLOGY has used the SD card storage and a dedicated password protected program using **GENSYS 2.0** internal automation functions.

Products installed

- 1 **GENSYS 2.0** in permanent paralleling mode,
- Additional remote CANopen inputs/ outputs slots.(analog and digital),
- 8Go SD Card.

APPLICATION





EXPERT IN GENERATOR SOLUTION

CRE TECHNOLOGY

130 allée Charles-Victor Naudin - Les templiers - Sophia Antipolis

06410 BIOT / FRANCE

Tél: +33 (0) 492 38 86 82

Fax: +33 (0) 492 38 86 83

info@cretechnology.com

BIOGAZ POWER PLANT APPLICATION_EN_A2018

