



The **RDM 2.0** works as a remote display and, combined with the **GENSYS 2.0 CORE**, can control a single or a multiple generating sets power plant. Connected to a **GENSYS 2.0**, a **GENSY 2.0 LT** or a **MASTER 2.0**, the **RDM 2.0** can be used as an additional remote display. **RDM 2.0** screen displays the same data as the **GENSYS 2.0**. The display shows engine and electrical parameters for intuitive operation.

### ADVANTAGES

- Same multi-function graphic display than the **GENSYS 2.0**.
- Same front panel than the **GENSYS 2.0**.



SWITCHBOARD MOUNTED VERSION WITH DISPLAY



### Part numbers:

**A53Y0** RDM 2.0 Switchboard mounted version with display

## KEY FEATURES

### ► INFORMATION DISPLAY

- **Engine parameters display:** oil pressure, water temp, speed, hours run meter...
- **Generator electrical parameters display:**
  - Phase-phase Voltage (3 phase RMS), phase-neutral Voltage (3 phase RMS)
  - Current (3 phase RMS), frequency.
  - Active power (3 phase RMS + total) and reactive power (3 phase RMS + total)
  - Power factor (3 phase RMS + total)
  - Active power energy (kWh) and reactive power energy (kVARh)
- **Mains electrical parameters display:**
  - Phase-phase Voltage (3 phase RMS) current (3 phase RMS), frequency, active and reactive power, power factor, import active power energy (kWh) and import reactive power energy (kVARh)

### ► POWER SUPPLY

- **DC voltage power supply input:** 8 to 40V<sub>DC</sub>, 600mA at 12V<sub>DC</sub> and 300mA at 24V<sub>DC</sub>
- **Standard languages:** English, Spanish, French, Italian. Other custom languages are downloadable on request

### ► COMMUNICATION PORTS

- Ethernet for connected module and embedded website, 4 digital inputs and 4 digital outputs.
- **Maximum distance between a module and a RDM 2.0:** 100 meters (NB. This length can be longer if a hub or a switch is used)

### ► ENVIRONMENT

- **Operating temperature:** -20 to +70°C
- **Storage temperature:** -30 to +80°C
- **Humidity:** 5 to 95%. Tropic-proof circuits for normal operation in humid conditions.
- **Front panel:** IP64 protection.
- **Rear panel:** IP20 protection.

### ► SIZE AND WEIGHT

- **Size:** 248x197x57mm (9.76x7.76x2.24in)
- **Panel cut out:** 177x228mm (6.97x8.98in)
- **Weight:** 0.9kg (2lb)

### ► DIRECTIVES

- **European Union Directives:** EN 50081-2, EN 50082-2, 73/23EEC

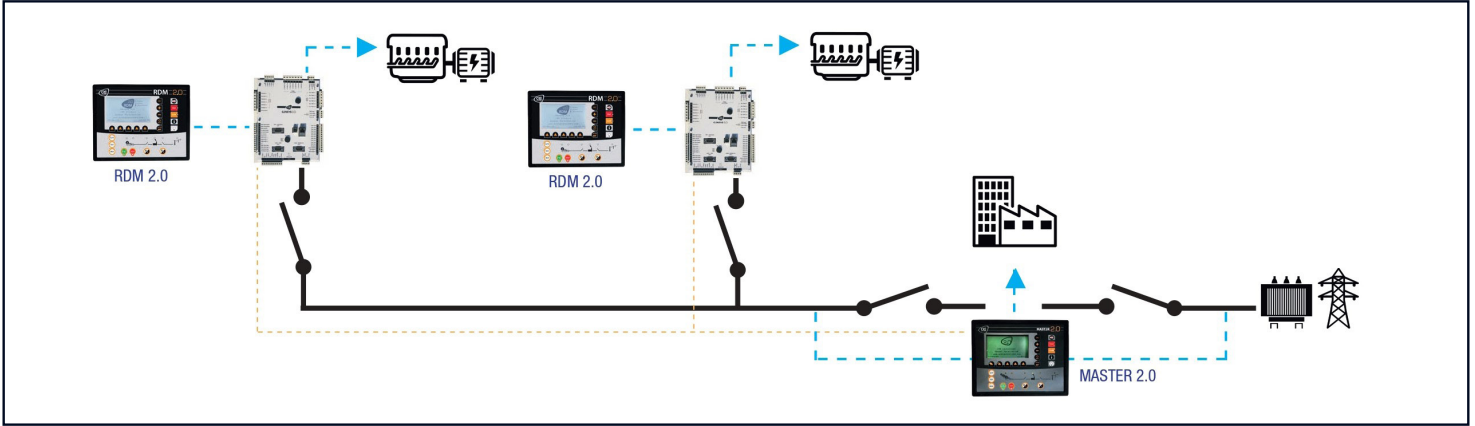
### ► OTHER

- **LCD characteristics:** 114x64mm, 60 cd/m<sup>2</sup> backlight, 3 character sizes.
- **Terminals:** 2 piece connectors, 2,5mm<sup>2</sup>

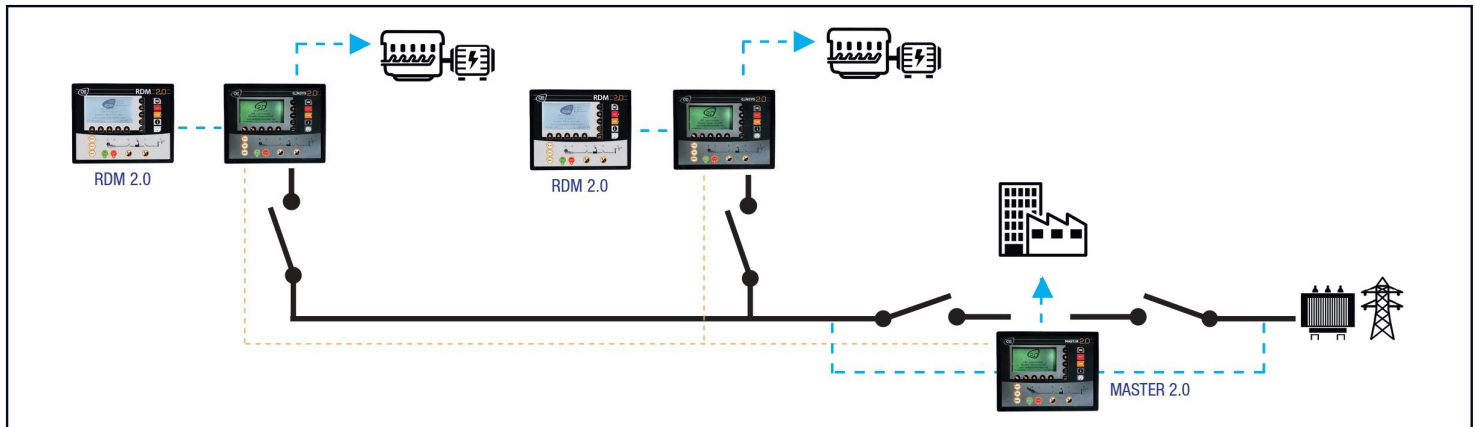


### POWER PLANT CONFIGURATIONS

#### STANDARD CONFIGURATION



#### REMOTE DISPLAY CONFIGURATION



#### MULTI CONTROL HMI

