



0	original edition	23/03/2017	MD	YB
Revision	MODIFICATION	DATE	Auteur	APPROUVE



Website: [www.cretechnology.com](http://www.cretechnology.com)  
 Email: [info@cretechnology.com](mailto:info@cretechnology.com)  
 Email: [support@cretechnology.com](mailto:support@cretechnology.com)  
 SKYPE: [support-cretechnology.com](https://www.skype.com/partner/cretechnology.com)

DESSINATEUR: MD

DATE DE CREATION: 23/03/2017

AFFAIRE N°: .....

## CRE TECHNOLOGY

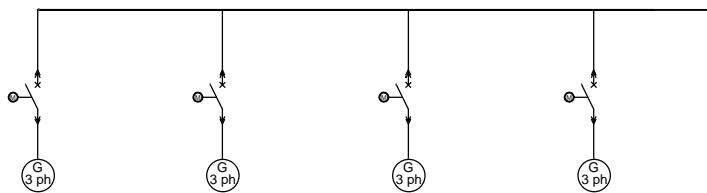
130 , allée Charles-Victor Naudin Zone des Templiers Sophia-Antipolis  
 Zone des Templiers Sophia-Antipolis  
 06410 BIOT-FRANCE

Tél: (0033) 492 38 86 82

Fax: (0033) 492 38 86 83

## GENSYS 2.0

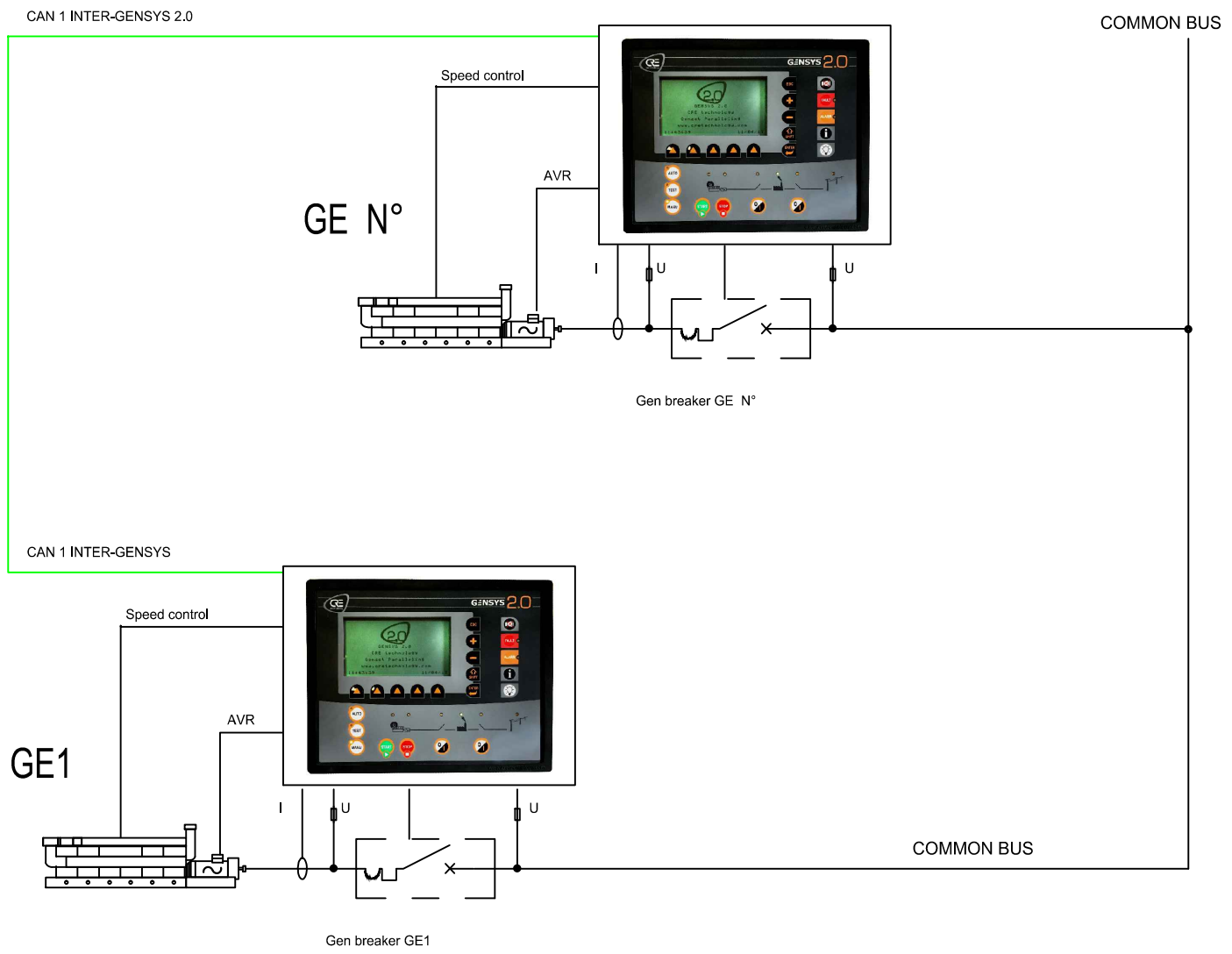
### WIRING DIAGRAM EXAMPLE



**GENSYS 2.0**

01/13



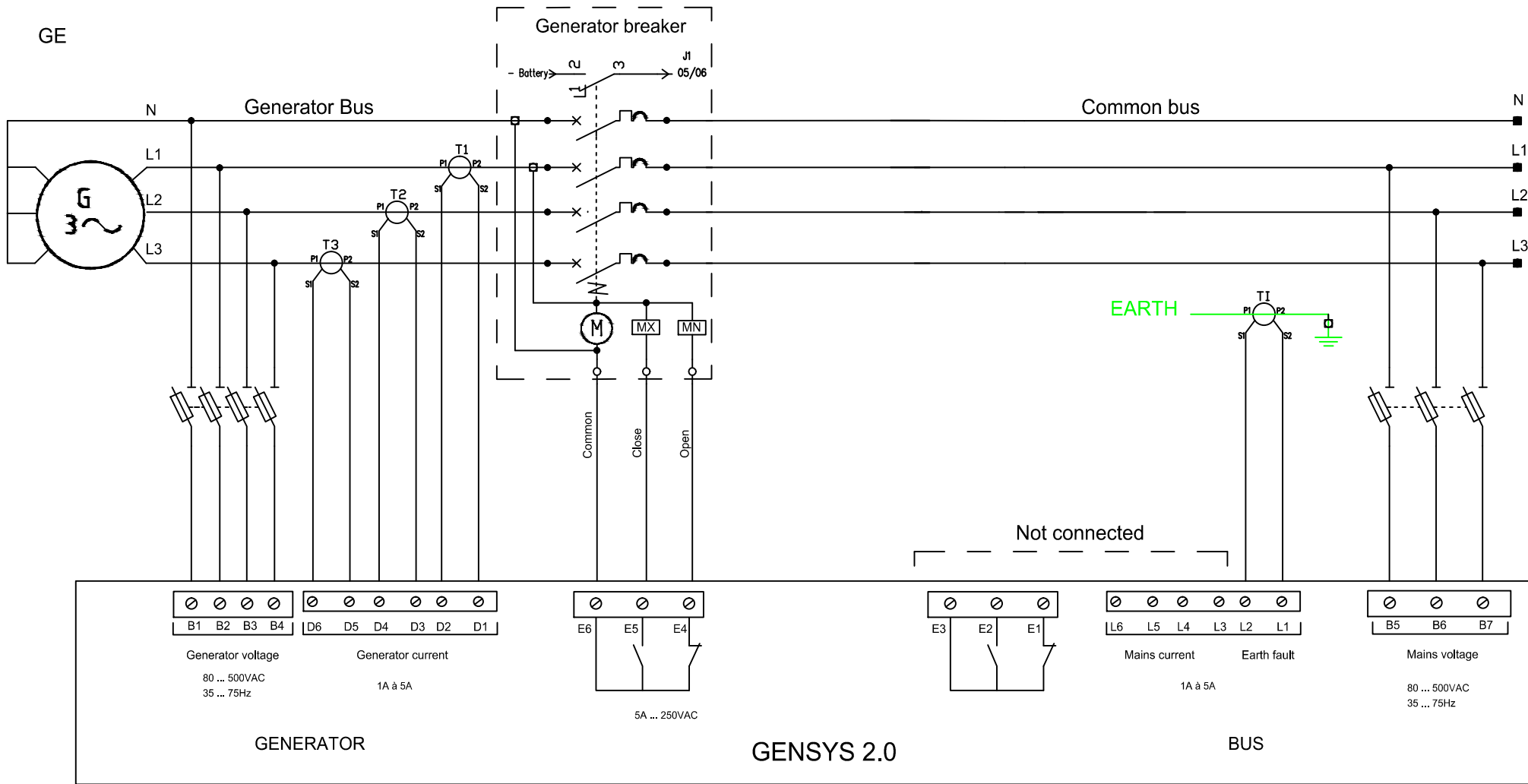


DESSINE :	M.D				
VERIFIE :	YB				
DATE DE CREATION :	0	23/03/2017	Edition originale	MD	
	23/03/2017				
	INDICE	DATE	MODIFICATION	DES.	

Generator paralleling wiring example  
 Document n° : ..... Schéma

Single line diagram

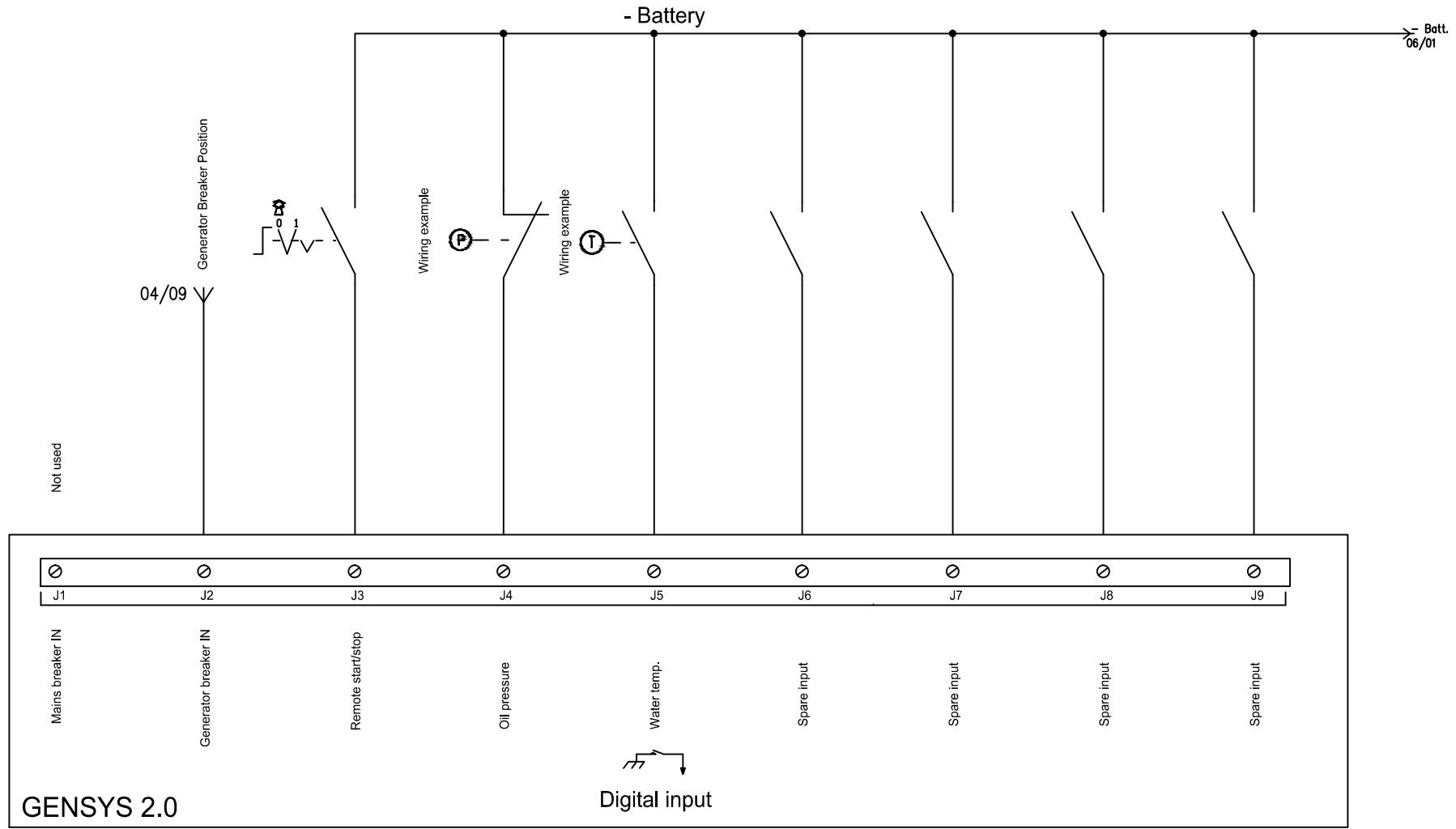
### Connection for GENSYS 2.0 on common busbar (genset paralleling)

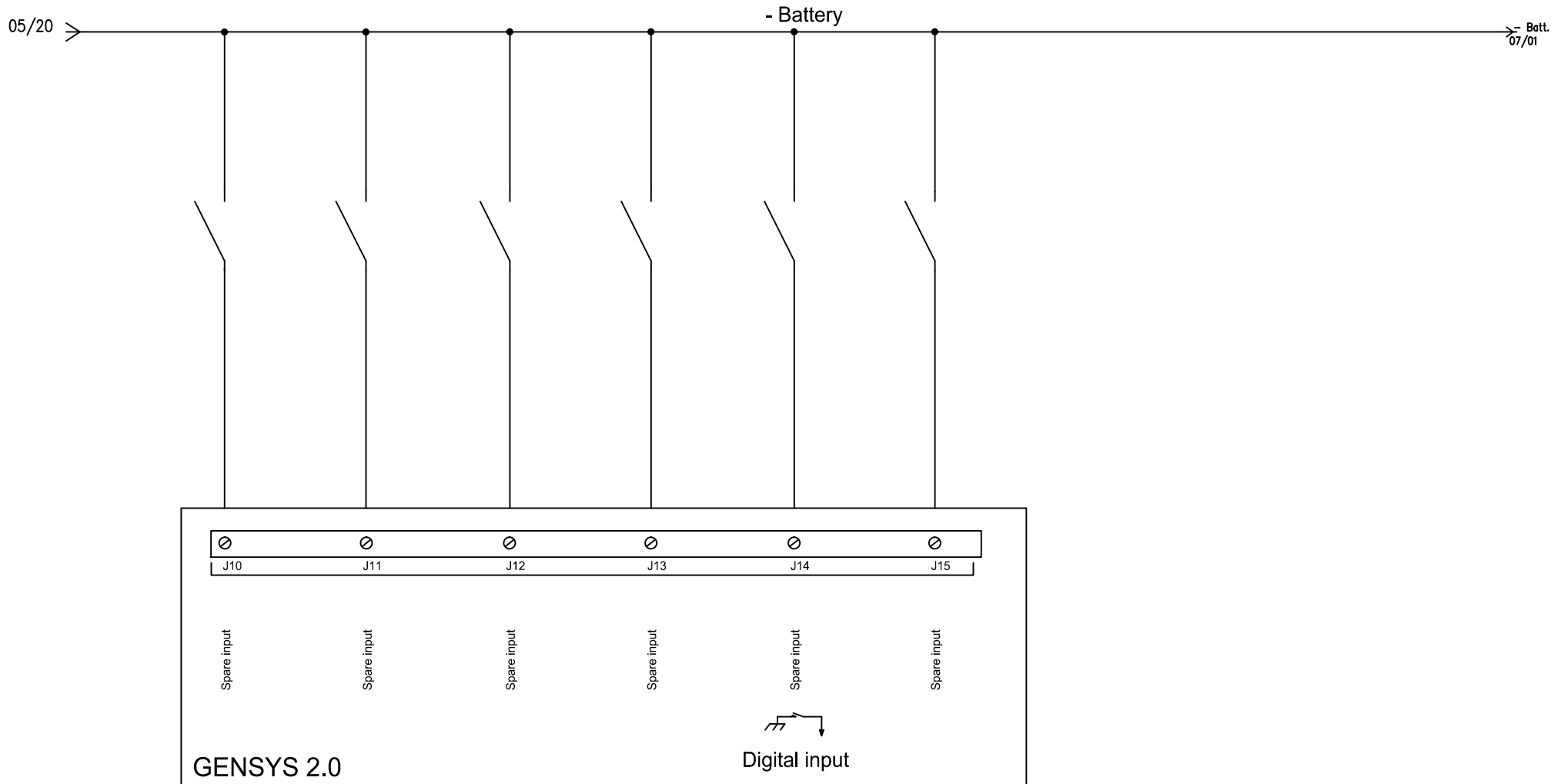


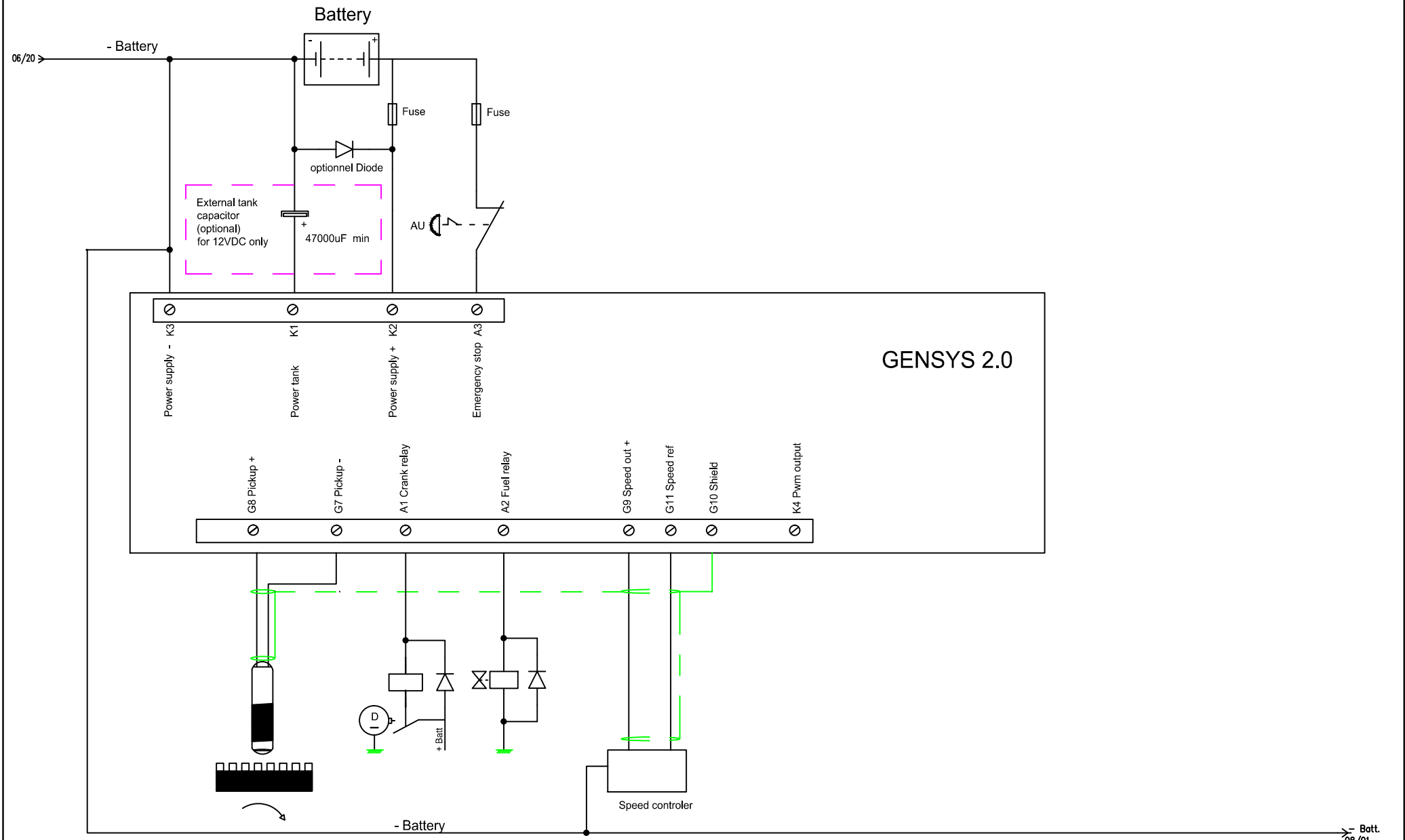
DESSINE :	M.D				
VERIFIE :	YB				
DATE DE CREATION :	23/03/2017	0	23/03/2017	Edition originale	MD
	INDICE		DATE	MODIFICATION	DES.

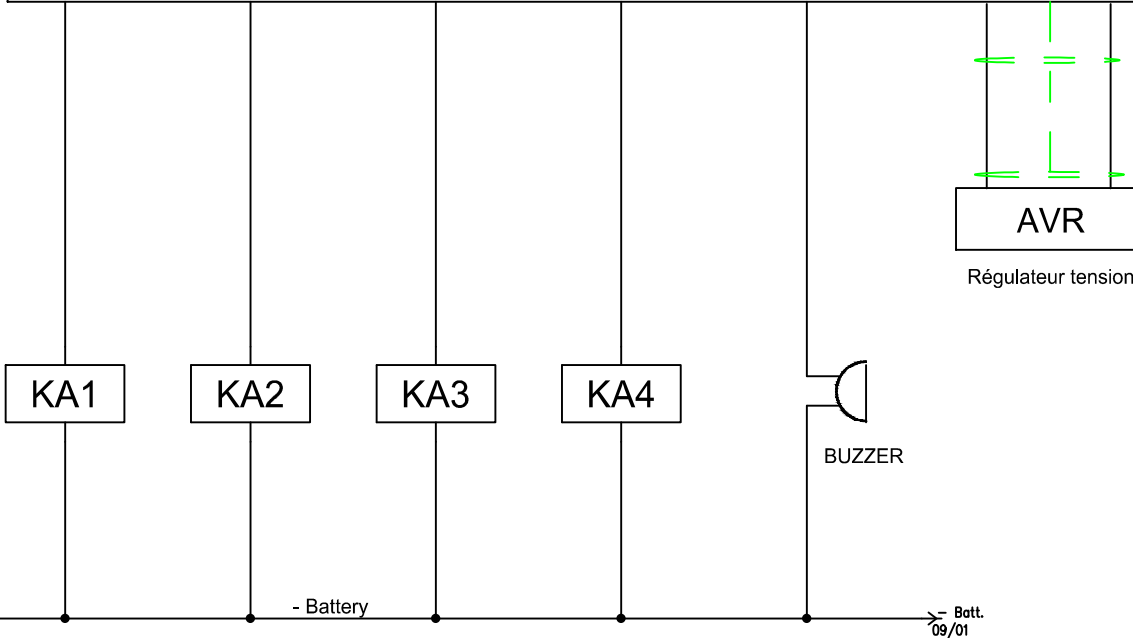
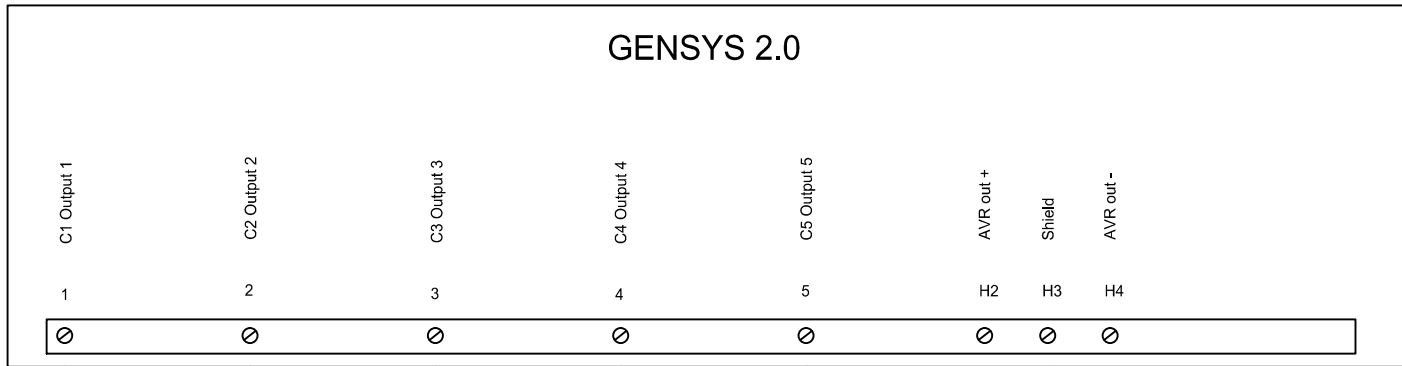
Generator paralleling wiring example  
 Document n° : .....Schéma

Power wiring





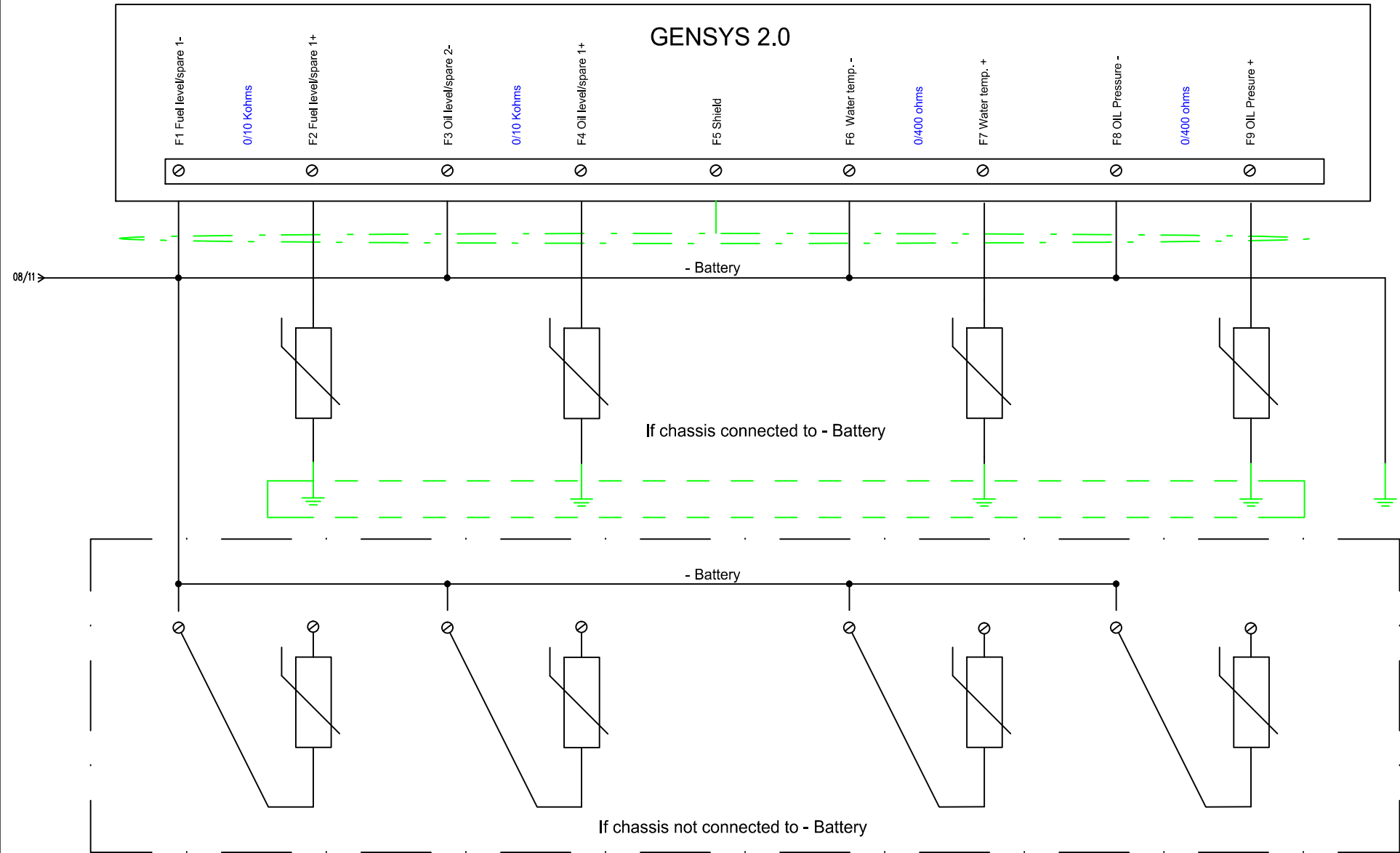




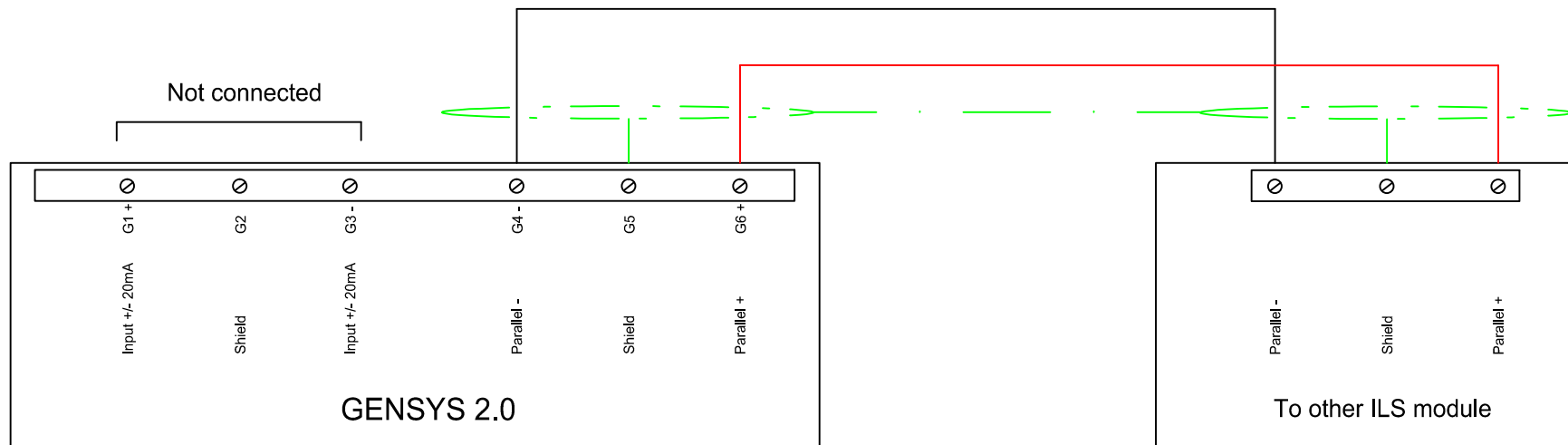
07/20

Batt.  
09/01

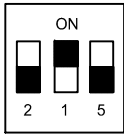




ILS Analogue load sharing lines (if CAN bus not connected)



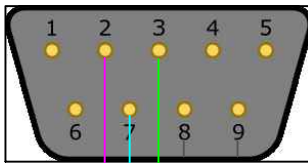
Resistor Switch  
ON 120 Ohms



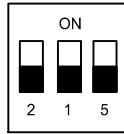
COM

- 1 NC
- 2 CAN-L
- 3 GROUND-1
- 4 NC
- 5 GROUND-2
- 6 GROUND-1
- 7 CAN-H
- 8 NC
- 9 NC

COM 1 GENSYS



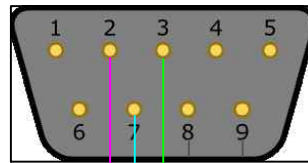
Resistor Switch  
ON 120 Ohms



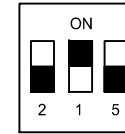
COM

- 1 NC
- 2 CAN-L
- 3 GROUND-1
- 4 NC
- 5 GROUND-2
- 6 GROUND-1
- 7 CAN-H
- 8 NC
- 9 NC

COM 1 GENSYS N°



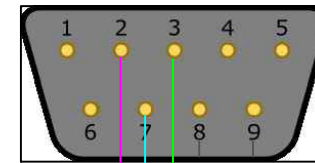
Resistor Switch  
ON 120 Ohms



COM

- 1 NC
- 2 CAN-L
- 3 GROUND-1
- 4 NC
- 5 GROUND-2
- 6 GROUND-1
- 7 CAN-H
- 8 NC
- 9 NC

COM 1 End line GENSYS



GROUND-1

CAN-H

CAN-L

Other GENSYS 2.0 connection on CAN bus line

120 Ohms terminaison resistor switch configuration example



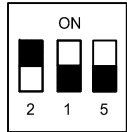
DESSINE :	M.D				
VERIFIE :	YB				
DATE DE CREATION :	27/03/2017	0	27/03/2017	Edition originale	MD
		INDICE	DATE	MODIFICATION	DES.

Generator paralleling wiring example

Document n° : .....Schéma

COM1 - CAN bus inter GENSYS 2.0 connexion

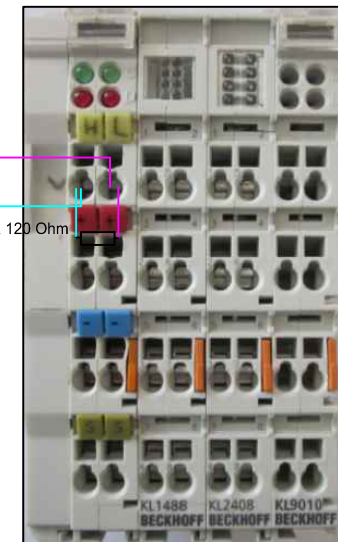
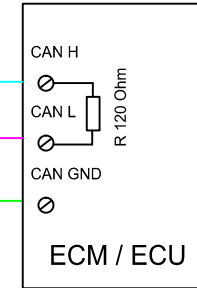
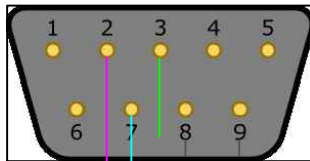
Resistor Switch  
ON 120 Ohms



COM

- 1 NC
- 2 CAN-L
- 3 GROUND-1
- 4 NC
- 5 GROUND-2
- 6 GROUND-1
- 7 CAN-H
- 8 NC
- 9 NC

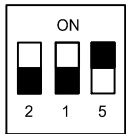
COM 2 CAN OPEN



The 120 Ohms termination resistor must be present on both sides

Not Available on GENSY 2.0 LT

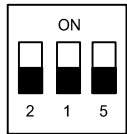
Resistor Switch  
ON 120 Ohms



COM

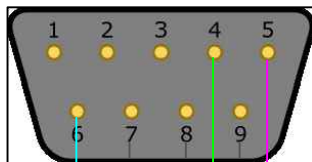
- 1 NC
- 2 NC
- 3 GROUND
- 4 GROUND
- 5 B
- 6 A
- 7 NC
- 8 NC
- 9 GROUND

Resistor Switch  
ON 120 Ohms

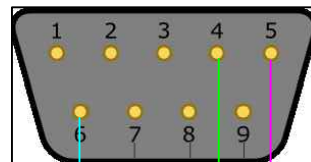


COM

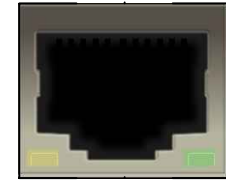
COM 5 GENSYS RS485



COM 5 GENSYS RS485 gensys N°



COM 4 RJ45



ETHERNET  
TCP/IP  
Modbus TCP  
CRE Config.

B

GROUND

A

GTC/GTB

Modbus RTU

Other GENSYS 2.0 connexion on Modbus RTU line

The 120 Ohms termination resistor must be present on both sides



DESSINE :	M.D				
VERIFIE :	YB				
DATE DE CREATION :	27/03/2017	0	27/03/2017	Edition originale	MD
		INDICE	DATE	MODIFICATION	DES.

Generator paralleling wiring example

Document n° : ..... Schéma

COM 5 - Modbus RTU connexion