



May 2006

Application note A40Z090224b-en-non essential consumer trip

Non essential Consumer Trip Marine Sequence

CRE Technology believes that all information provided herein is correct and reliable and reserves the right to update at any time. CRE Technology does not assume any responsibility for its use unless otherwise expressly undertaken.

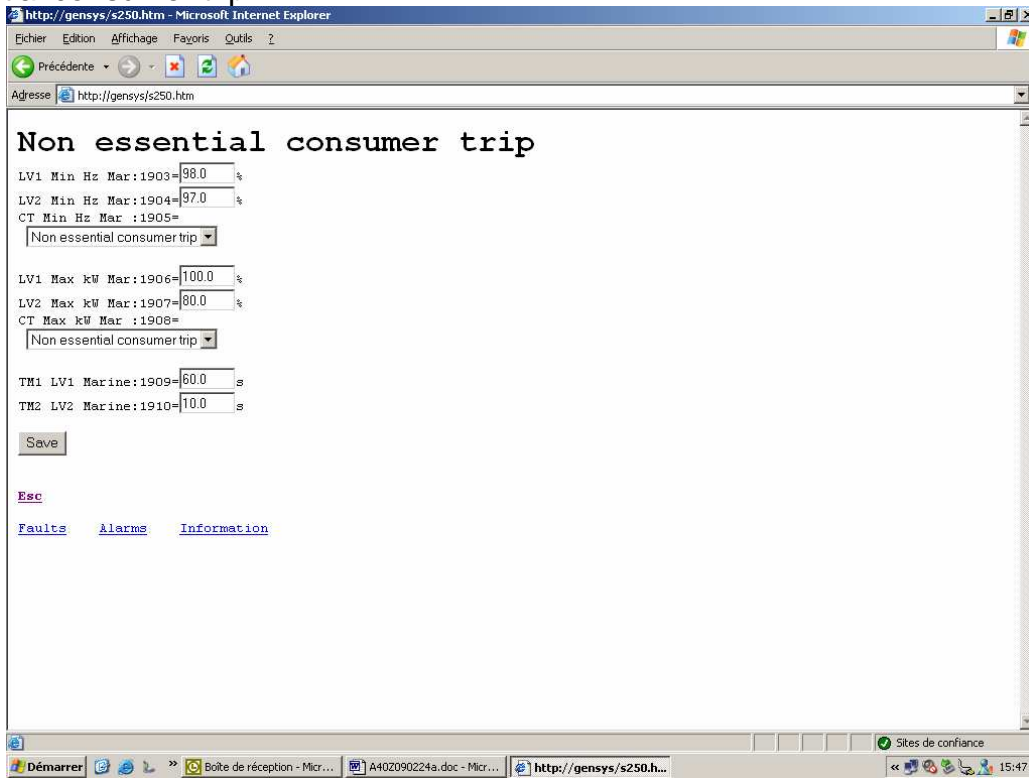
CRE Technology
Allée Charles-Victor Naudin
Zone des Templiers - Sophia Antipolis
06410 BIOT - FRANCE
Téléphone : + 33 (0)4.92.38.86.82 - Fax : + 33 (0)4.92.38.86.83
www.cretechnology.com - info@cretechnology.com
RCS Antibes : 7488 625 000 15 - N°TVA FR54 488 625 583

Introduction

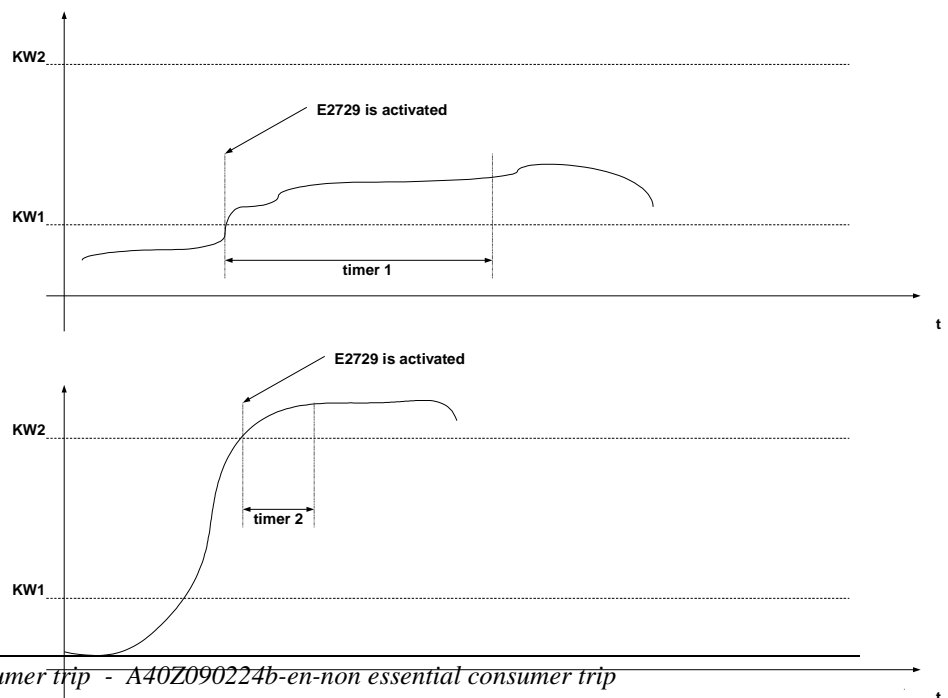
This application note describes the Non essential consumer trip.
This application is only available in the version 2.09 and following.
If the generator reaches the threshold of overload or under frequency (following timers), GENSYS activ outputs to trip non essential load.

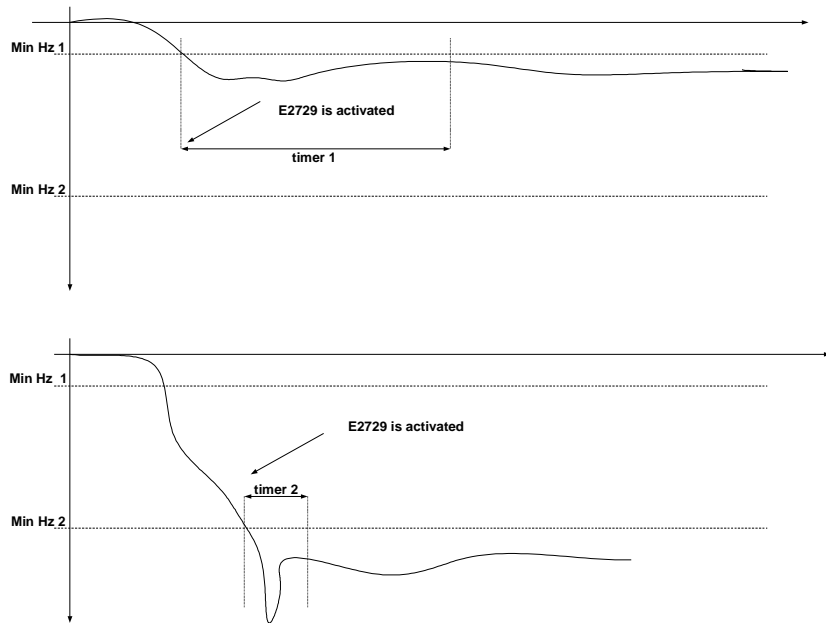
Procedure

1) To set the different thresholds and timers, go to /Configuration/Marine/Non essential consumer trip :

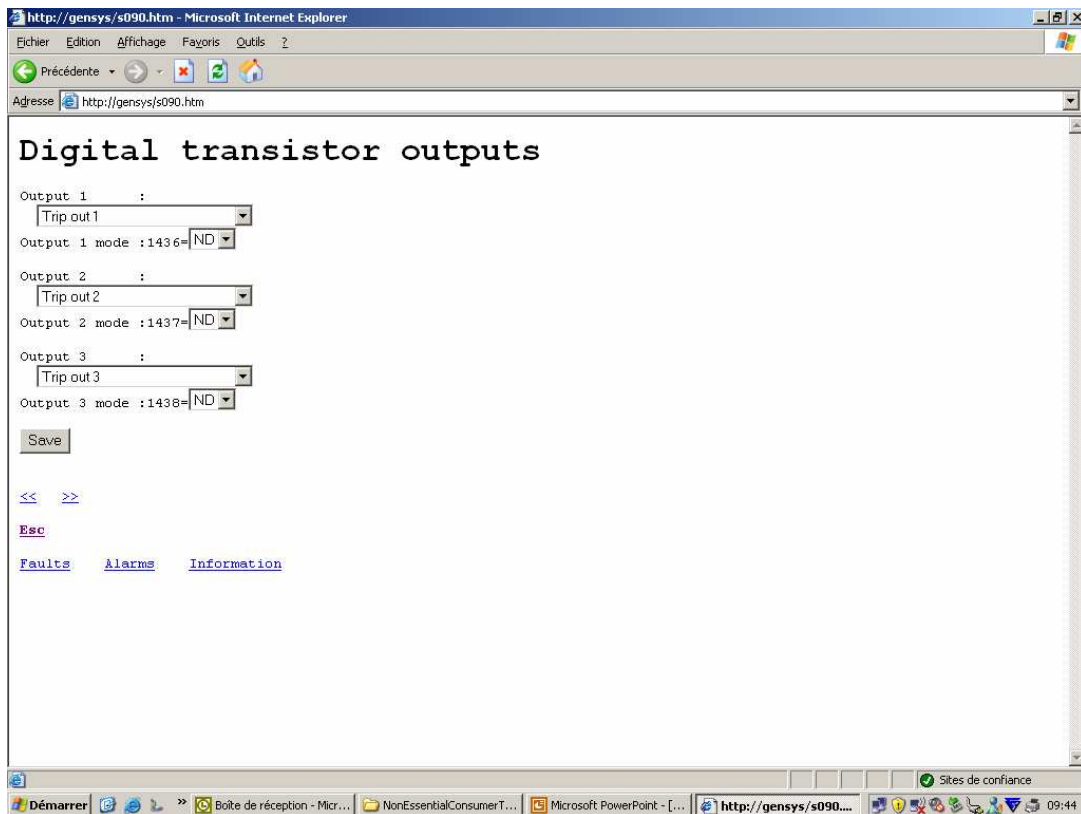


So with this different thresholds and timers, you can create a fast and normal protection:
NB : The value of timer 1 and timer 2 are common for the protection of overload and underfrequency.
See diagrams below :

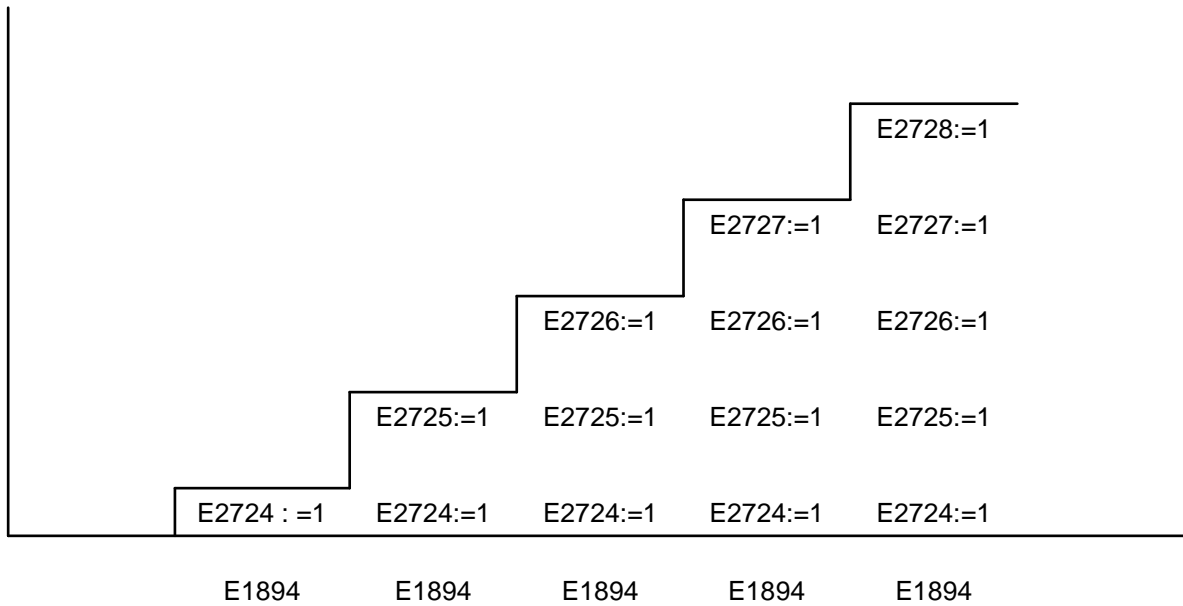




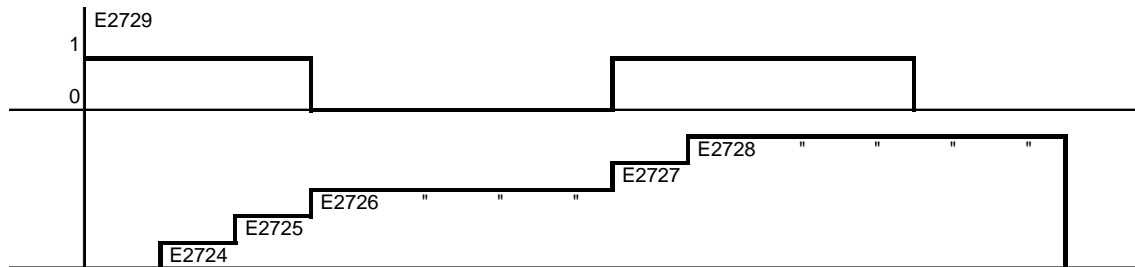
2) Configuration of the trip output (/Configuration/digital transistor output/):



When the variable E2729 is activated, each trip output will activate after the same timer (E1894) :



When the variable E2729 become inactive, GENSYs stay the previous trip output activ and when variable E2729 become active the trip output continue as before.



To deactivate the 5 outputs, it's necessary to reset on the front panel the alarm "E2729".